



acquire. transform. empower.

125 Westridge Drive, Watsonville, California 95076 U.S.A.
PHONE: (1) 831.722.7373 FAX: (1) 831.722.1405
www.tritonimaginginc.com info@tritonimaginginc.com

STATE-OF-THE-ART SEAFLOOR IMAGING AND MAPPING SOFTWARE
Survey Planning Digital Acquisition Real-Time Quality Control Automated Processing Interpretation Visualization Data Fusion

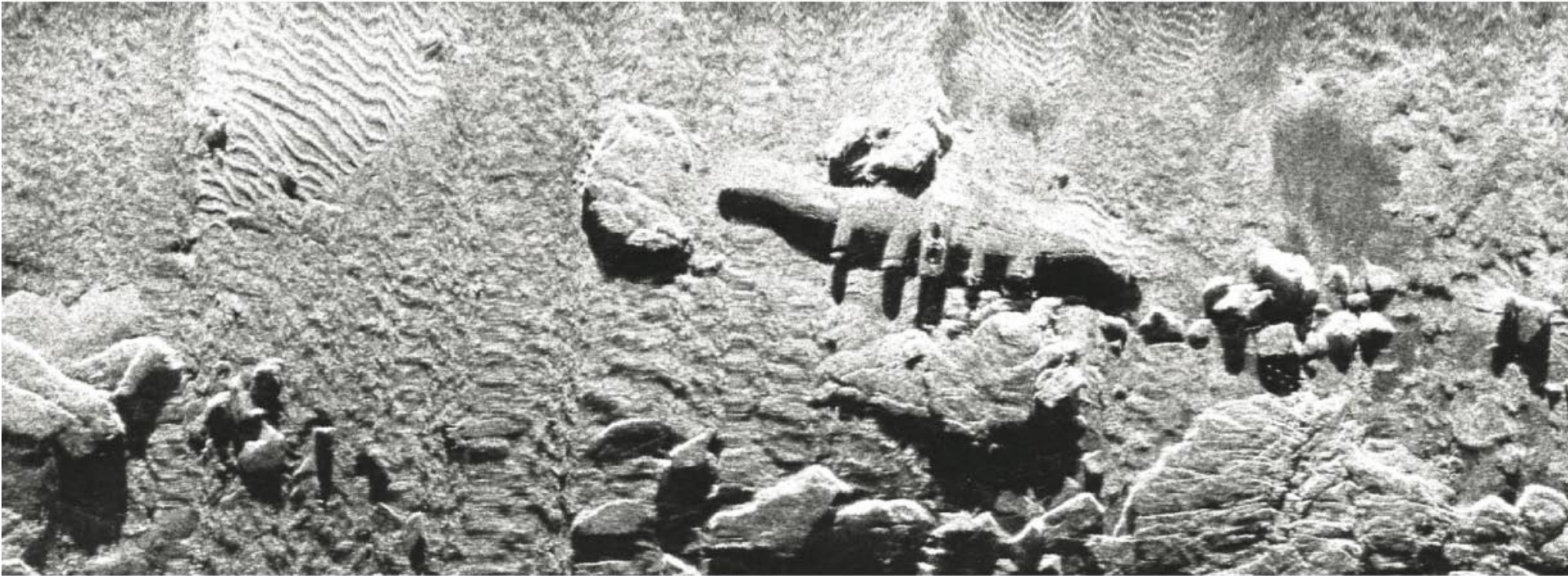
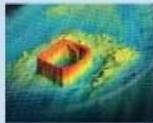


Image of Boeing B17 WWII bomber off the coast of Corsica. Data acquired in Triton Isis® MBSS-Logger™ and processed in TritonMosaic™. Image courtesy of CERES, France. ©2005 Triton Imaging, Inc. All rights reserved.

GLOBAL MILITARY



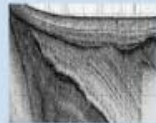
HYDROGRAPHY



SEARCH & SURVEY



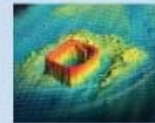
ACADEMIA



GLOBAL MILITARY



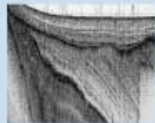
HYDROGRAPHY



SEARCH & SURVEY



ACADEMIA

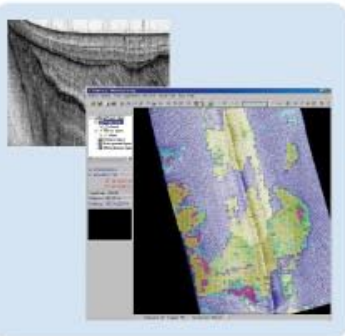
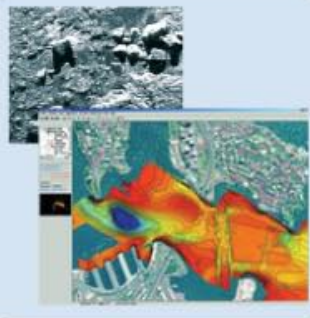


Triton Imaging, Inc. pioneered sonar data acquisition software more than twenty years ago. Our technology dramatically changed the industry by automating data manipulation, detailed analysis and interpretation. Today Triton is leading research and development of products that acquire and optimize a multitude of data streams. We offer COTS products and custom-engineering solutions for a variety of data types, including side scan sonar, forward-looking sonar, multibeam sonar, sub-bottom profiler, and shallow seismic. Our goal is to provide high-performance software tools that enable our customers to swiftly acquire answers from complex, multi-sensor data sets.

Our vision is to be the premier provider of digital image data acquisition and processing products for military organizations, scientific institutions and commercial entities worldwide. We have built a loyal community of customers, including global naval mine-hunting units, engineering survey companies and marine geologists, archaeologists and treasure hunters; offshore gold and diamond miners; hydrographic surveyors and ROV/AUV companies.

global military

Our COTS products are used by military organizations worldwide to aid in mission planning, mission monitoring, perimeter security, Q-Route survey, harbor monitoring and mine-countermeasures.

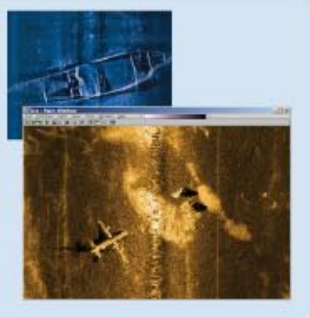


academia

We support academic institutions around the world in cooperative partnerships and scientific and research program participation. Academic institutions offer a unique environment for assessing advanced technologies and developing new techniques for analyzing data. Triton provides the scientific community with the advantages of COTS products, while supporting an open architecture concept to interface with the institutions' own scientific developments.

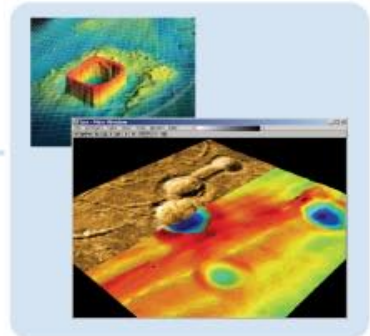
search and survey

Our survey planning tools allow operators to select a region and construct survey routes, increasing the effectiveness of an object search survey. Our survey acquisition tools ensure raw data is properly logged. Our survey management tools aid in mission monitoring, including capabilities such as automated feature extraction, contact classification and location, and report generation. Applications range from marine archaeology, pipeline inspection and site survey to military recovery. Triton has a history of teaming with sophisticated customers in search of solutions for challenging projects. Successful search/recovery projects include missile debris, mine and explosive ordnance, archeology, shipwrecks and aircraft debris such as TWA flight 800, The USS Central America, and The Lacona.



hydrography

Efficient hydrographic mapping of seafloors, lakes and rivers requires highly effective survey planning, data management and processing charting tools. Triton's tools enable you to directly target your mapping to your operation - from dredging, pipeline and cable route surveys, environmental surveys, to harbor monitoring.



massive data flows.

Modern surveys require sensors that create ever-increasing data rates, complex interfaces and time-consuming data conversions. New sensors such as synthetic aperture sonar, dynamically-focused multibeam side scan sonar, multi-ping side scan sonar, SARA CAATI sonar, and interferometric sonar generate data at phenomenal rates. Such large data flows increase the importance of a central workstation to interface the sensors and input/output devices. Triton products speed and simplify these complex tasks.

fully-integrated systems.

Accurate data collection from multiple sensors is one of the most critical components of an integrated survey system. By saving real-time data in a single file, Triton software minimizes data conversion, optimizes data flow and reduces time to report. A centralized data collection point eliminates problems with data time-stamping, minimizing access time and reducing post-processing time. Triton engineers are available to assist you with component selection, system integration, and operator training to increase their efficiency in the field.

low life-cycle cost.

Triton products are easily upgraded to optimize the performance of virtually all sonars as they enter the market. Software upgrades can be limited to new sonar interfaces, minimizing costs, or extended to advanced sonar upgrades. Through our EMA program, Triton software is constantly updated with new features. If you want a full-featured upgrade path for tools such as real-time processing, survey QC tools, post-processing bundles and advanced filters, Triton guarantees future system compatibility.

advanced engineering capabilities.

Triton has the capability to transform your most challenging data interpretation and visualization needs into working prototypes in minimal time. Our new software architectural framework enables the development of a working concept that integrates 2D and 3D imagery and graphics, using advanced, intuitive custom User Interface components and tools. Benefits include leveraging the maximum capabilities of current CPU architecture and tools, advanced controls and human interaction capabilities, seamless integration of photo-realistic controls and displays capable of individual client customization.