



Triton ROVFlight™

Real-time Tracking of Remotely Operated Vehicles

The ROVFlight™ software works in conjunction with the TritonNav™ and TritonMap™ modules to track remotely operated vehicles in real-time on a mosaic, Bathymetry DTM, electronic nautical chart, or other available map-based survey data. The position of the ROV is received through a serial port and is represented by an icon on the user-selected geo-referenced background in TritonMap™, thus allowing the operator to guide the ROV towards a specific location while avoiding obstacles visible on the dataset. Simultaneous graphical display of ship position is also supported.

ROV operations can be planned in advance in TritonNav™ by specifying target locations, waypoints, and/or desired survey track to be visited/followed by the ROV. Planning is accomplished with graphical tools working in the same map-based, TritonMap™ environment and with the same datasets that will be displayed during real-time operations. ROV navigation data is stored in real-time for later playback, with the ROV track displayed on the same data used during real-time operations or other geo-referenced data of the survey area. Navigation can be output to a file for input to other systems for analysis.

Planning

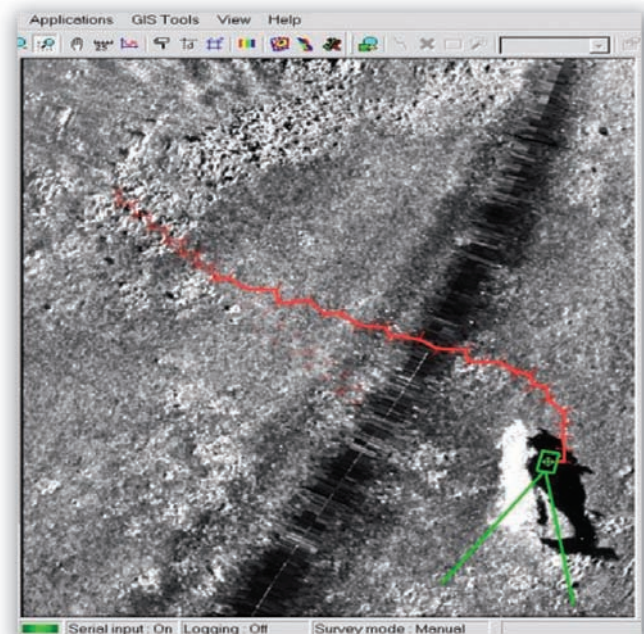
- Load sidescan mosaic, bathymetry DTM, electronic chart and/or other available data of survey area into map-based, multi-layer GIS environment.
- Graphical layout of waypoints, targets, hazard areas, vehicle path.

Real-Time Operations

- Configure serial ports (standard NMEA & custom formats supported) for input of ROV and ship position.
- Guide ROV while viewing its position on the sidescan mosaic image.
- Follow the planned track, visit waypoints and targets, and avoid hazard areas shown graphically on the map-display.
- Double-click on the mosaic image at points of interest to save snippet images for later review.
- Save navigation data for entire ROV mission for later replay.

Post Mission Analysis

- Replay ROV mission in TritonMap™
- Review target images
- Extract ROV navigation data (position, time, depth, altitude, heading, pitch, roll, etc.) for analysis by 3rd party systems.



Options

- S-57 electronic chart background display
- 3D perspective viewing of bathymetry data with sidescan imagery draped
- 2D target analysis (measurement, classification, etc.)
- Sidescan mosaic creation
- Seabed classification
- Navigation processing

TRITON IMAGING® INC.

info@tritonimaginginc.com
8 3 1 . 7 2 2 . 7 3 7 3
www.tritonimaginginc.com