

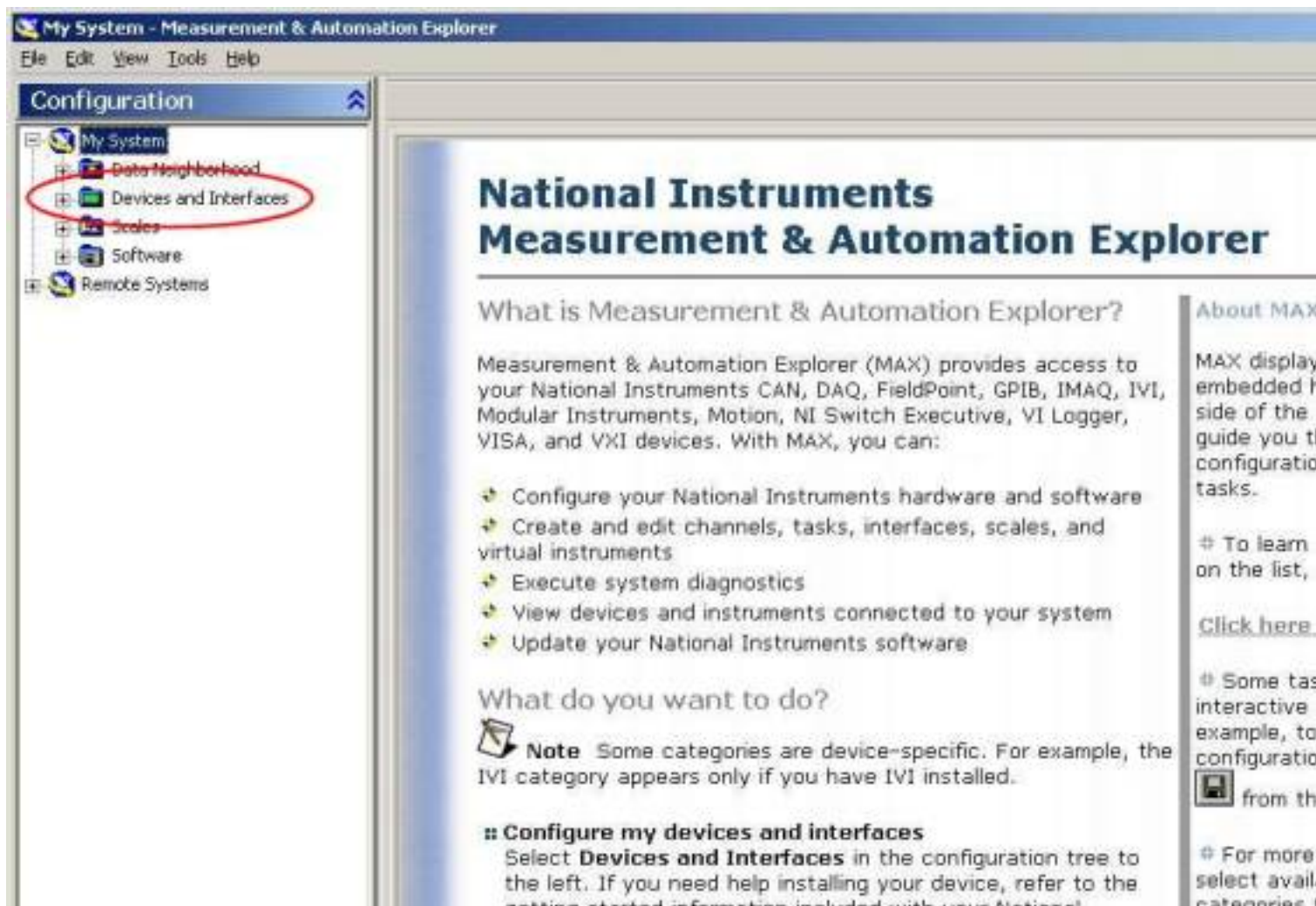
Testing a National Instruments 4474 board.

There are some useful test programs included with the NI software that allow you to independently check the function of all 4 channels on the board.

Double Click the “Measurement and Automation” Icon on your Desktop:



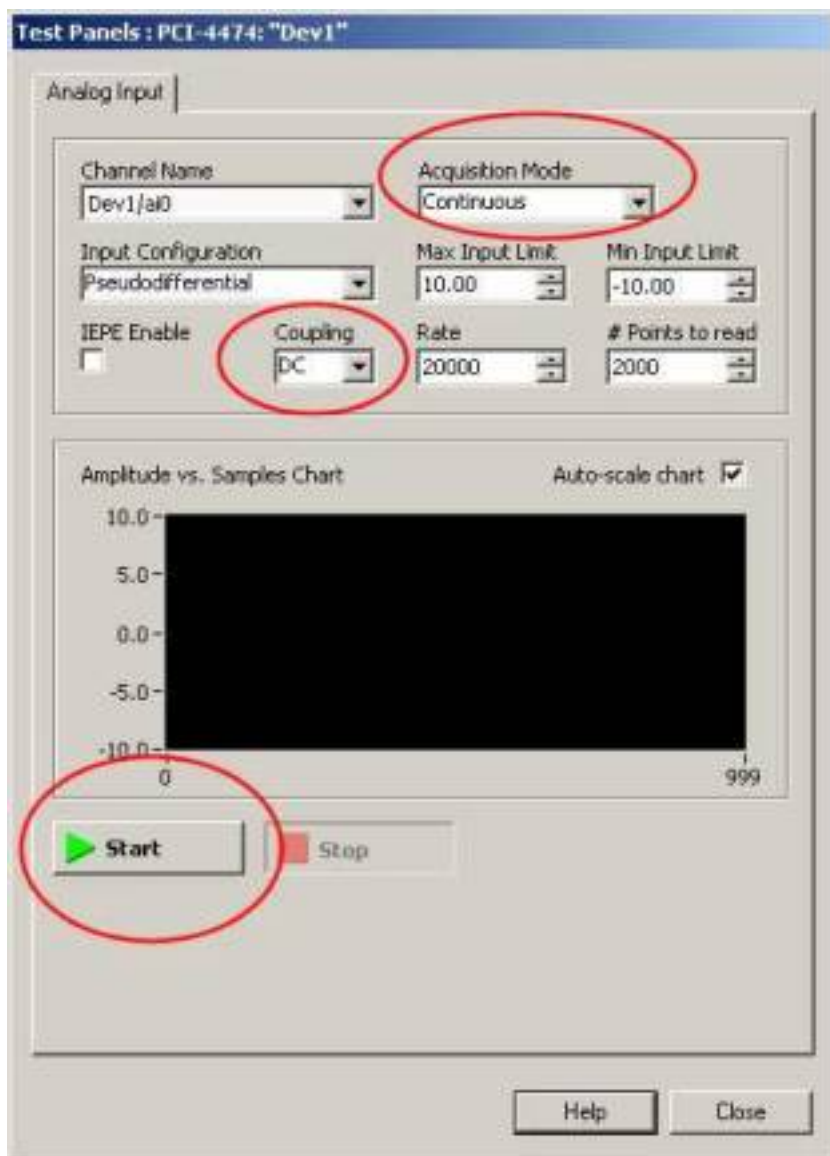
The Measurement and Automation Explorer starts:



Expand the tree - Devices and Interfaces, choose PCI-4474: "Dev1" and Right Click:

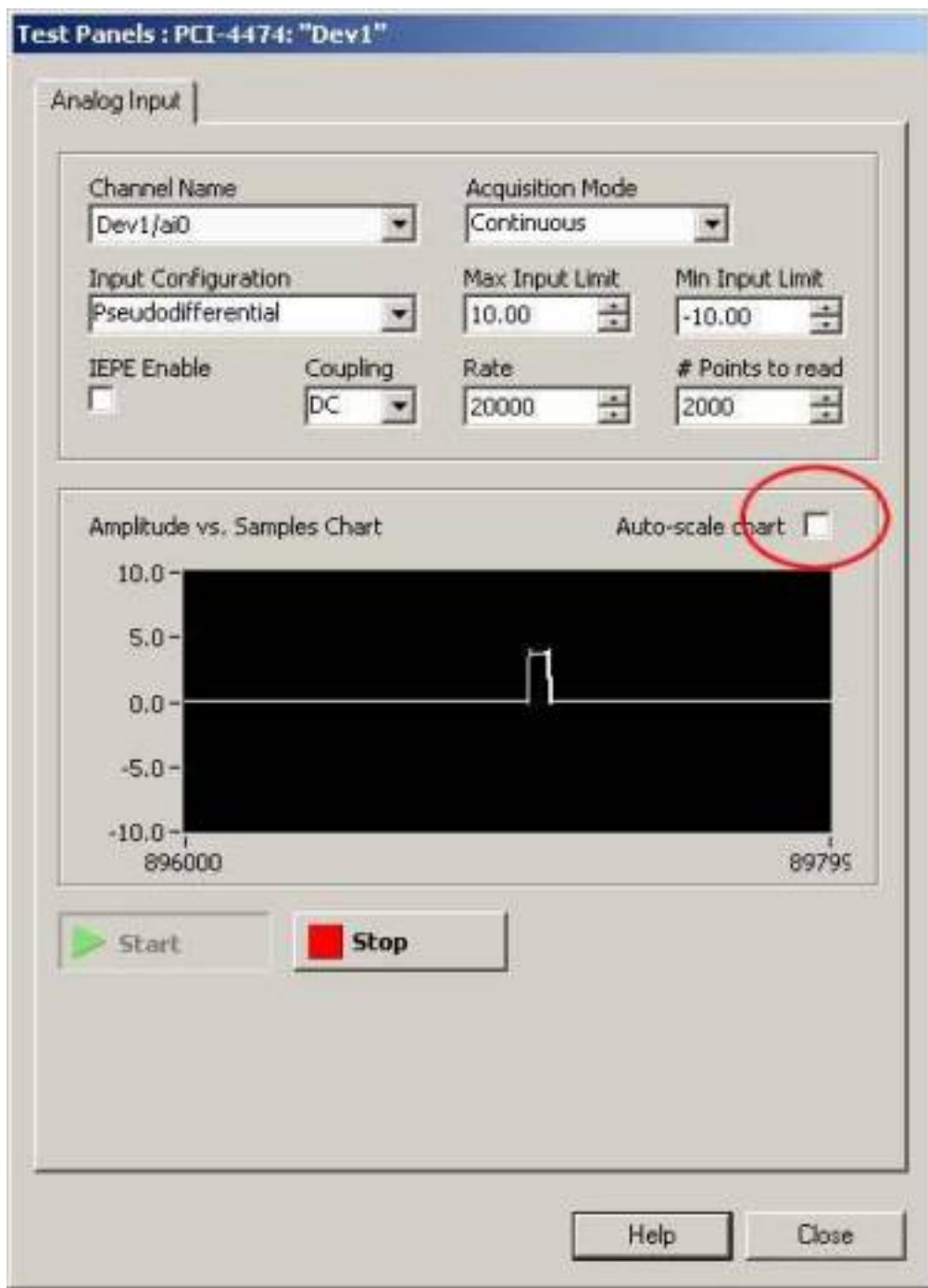


Now click Test Panels...



Set up as shown: Continuous, DC, then Start ... Note we are testing Channel 0 (the top connector on the NI board this is trigger input 1 in SB-Logger) in the test panel it is referred to as "Dev 1/ai0"

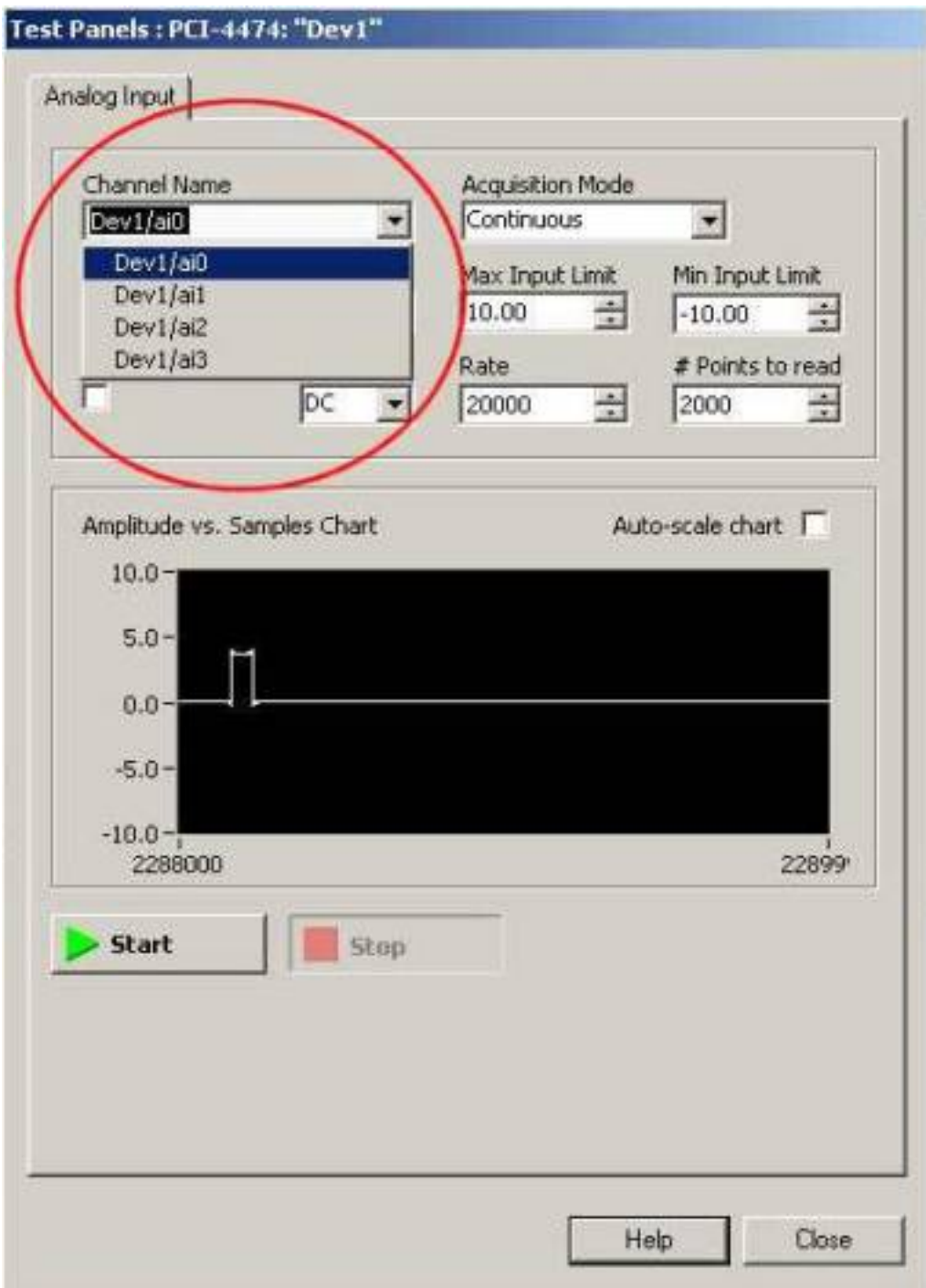
Now you will need a trigger pulse or some kind of signal connected to Ch0 on the NI board (top connector) in the picture that follows a 5v TTL pulse was used:



Note that unchecking "Auto-scale chart" allows you get an idea of the amplitude of the pulse.

To perform the same check on the other channels you can go back and select:

Dev1/ai1, Dev1/ai2, Dev1/ai3:



You should get similar results from each channel.