

PRE-CONFERENCE WORKSHOP

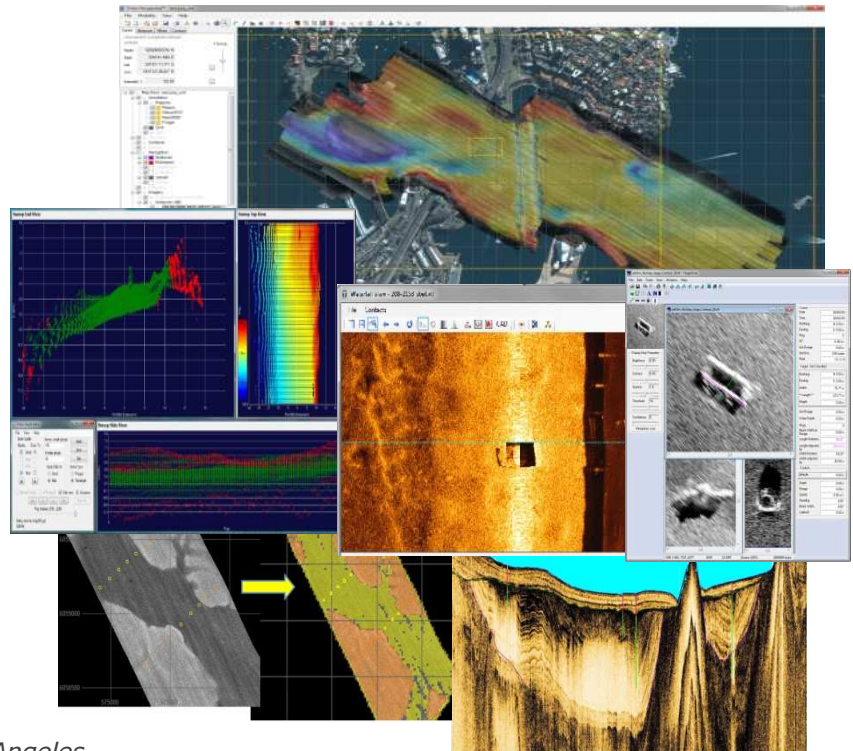
February 20, 2012 • 1:00pm to 5:00pm

Integrated data processing and interpretation with Triton's new Perspective software...

Introduction of new multi layer GIS-based advanced processing application for producing accurate imagery of the seafloor and subsurface. Allows for fusion of sidescan, multibeam and subbottom imagery in the map view with access to raw waterfall, swath or profile data for enhanced interpretation of processed results.

Topics/Schedule:

- 1:00pm Arrive - Refreshments
- 1:15pm Perspective Map Interface
- 1:45pm Sidescan Processing
 - MosaicOne Wizard
 - Waterfall Viewer
 - TargetOne
 - SeaClass
- 2:30pm Bathymetry Processing
 - BathyOne Wizard
 - Swath Editor
 - A-B Change Detection
- 3:15pm Break - Refreshments
- 3:30pm Subbottom Processing
 - Filters
 - Reflectors
- 4:15pm Case Study
 - Port Security, Port of Los Angeles



This workshop is being provided for the following interests:

- New users interested in how the software works and what each software package offers.
- Current users interested in learning how to get the most from their software.
- Users of TritonMap and BathyPro interested in upgrading to Perspective.
- Users of our competition's software interested in learning more about what Triton offers.

To sign-up for the Shallow Survey 2012 conference and Triton's pre-conference workshop, please use the conference registration form found near the bottom of the following webpage:

http://www.conference.co.nz/shallowsurvey/registration_information

To sign-up only for Triton's pre-conference workshop, or for more information regarding the workshop, please contact Tony Ramirez at: tramirez@tritonimaginginc.com

Seating is limited so reserve your place today!