

Triton Isis® MB-Logger™

Cost competitive data logging software for multibeam sonar data

Triton's Isis® MB-Logger™ application combines accurate data logging with powerful quality control displays to provide survey groups with a cost competitive solution to their data acquisition needs. Raw multibeam data and ancillary data streams (navigation, attitude, heading, etc.) are time-stamped and stored as XTF files. Interfaces are available for most multibeam sonars on the market. The modularity of the software suite ensures compliance with any survey budget and enables expansion as survey capabilities grow. Triton's commitment to implementing state-of-the-art processing techniques ensures a long life cycle for the product. Ease of set-up, intuitiveness of use, and a full-featured upgrade path for all current and future Triton technology makes the Isis MB-Logger package a sound investment for any survey organization.

Components

- Triton Isis MB-Logger - data logging application for multibeam sonars.

Capabilities

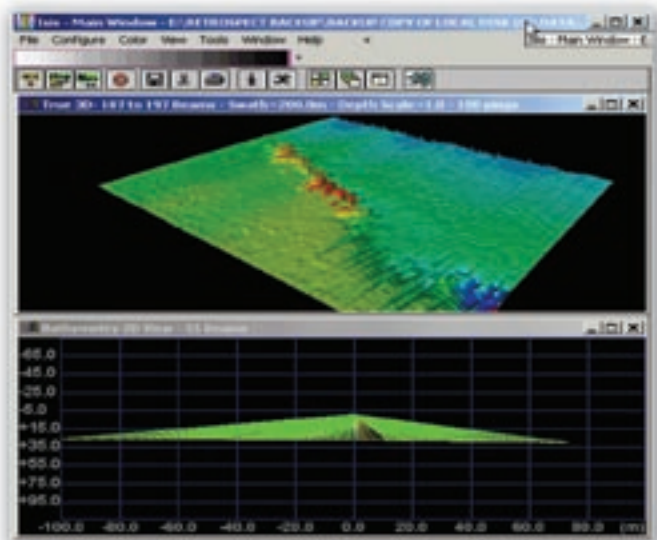
- Logging of raw multibeam sonar data including range, theta, amplitude, and Snippet information.
- A variety of quality control windows for monitoring auxiliary information (navigation, attitude, heading, single beam echosounder, etc.).
- Bathymetry Confidence window for comparison of multibeam depths with single beam echo sounder depths.
- Support for logging of POS/MV raw navigation and attitude packets.
- Export of NMEA strings for MVP control.

Data Products

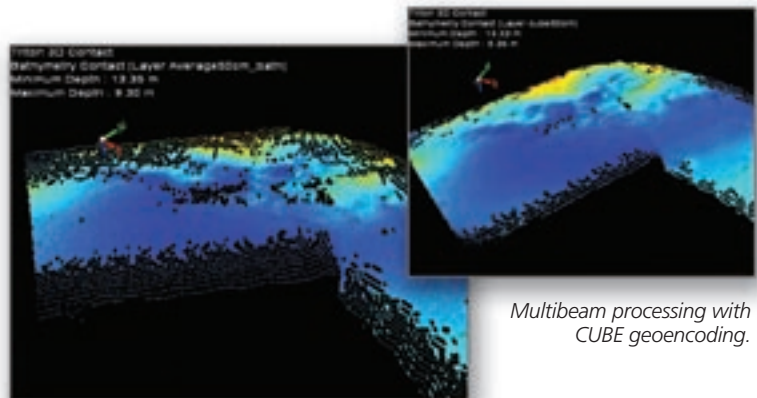
- XTF file of raw multibeam data co-registered with all auxiliary data.
- ASCII files of any variables within the XTF file.

Optional Modules

- Triton Survey Monitor - real-time statistical analysis of multibeam data for advanced quality control.
- Triton MB-DTM RT - real-time correction and editing of multibeam data.
- Triton GSF Export - capture of real-time processing results in non-proprietary format.
- Full upgrade path to support the latest advances in multibeam data acquisition and processing.



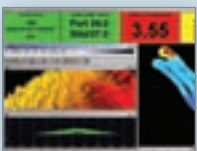
Triton Isis SS-Logger showing raw sidescan sonar imagery



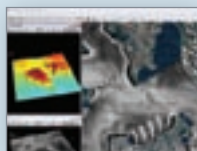
Multibeam processing with CUBE geoencoding.

Multibeam processing with AVERAGE geoencoding.

multibeam



sidescan



seismic



TRITON
IMAGING®, INC