

Triton SS-Logger™

Modular software for sidescan sonar data acquisition and review

Triton SS-Logger™ is our new modular sidescan sonar data logger. The easy-to-use, extensively field-tested core components of Isis® Sonar form the basis of Triton SS-Logger, including servers to most sidescan sonars on the market today. The software is fully flexible for upgrading as new survey requirements arise. Triton SS-Logger integrates external sensors including GPS & gyros and correctly logs and geo-references sonar imagery into XTF files. Triton SS-Logger boasts the stability of Isis® Sonar while remaining competitively priced with other products on the market. Ease of set-up, intuitiveness of use, and a full-featured upgrade path for all current and future Triton technology makes SS-Logger a wise investment for any survey organization.

Acquisition

- Support for analog or digital data.
- 16-bit A/D conversion.
- Four simultaneous channels.
- Configurable serial interface with support for NMEA strings.
- Support for cable out / layback.
- Numerous QC window options.
- Automatic line switching and file naming.
- Coverage map for confirmation of swath overlap.
- XTF output.

Playback

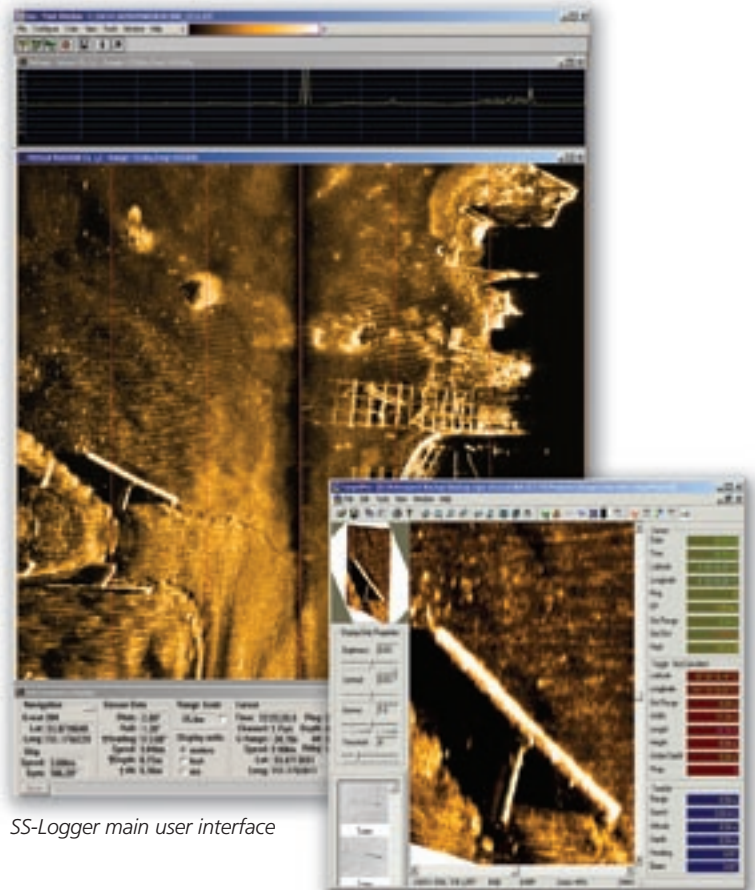
- Intuitive playback controls.
- Flexible search / scrolling options (pause, reverse, advance, and mirror control).
- Isis Explorer option for multiple XTF file review.

Processing / Interpretation

- A variety of TVG options.
- Slant range and speed corrections.
- Bottom tracking (manual and automatic).
- Beam angle / grazing angle correction.
- Advanced target capture module.
- Optional real-time and off-line mosaicking capabilities.

Unique Attributes

- Full featured upgrade path to support any survey operations or client data requests.
- Automated report generation.

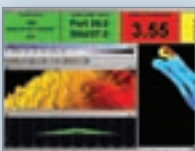


SS-Logger main user interface

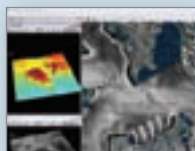
Geocoded image in optional TargetPro module

- Registration of saved contacts in XTF file and display on waterfall windows.
- Support for latest thermal printers.
- Four simultaneous channels of Side Scan Sonar
- Single channel of Sub Bottom Profiler in XTF format.

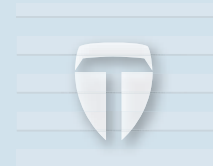
multibeam



sidescan



seismic



TRITON
IMAGING®, INC