

# Triton MosaicOne™

*Cutting-Edge Sidescan Mosaic Software*

Triton MosaicOne is the latest addition to the completely new Triton Perspective product line. With unparalleled performance, ease of use, versatility, and image quality, MosaicOne makes the production of high quality geo-registered sidescan mosaics a simple process. This new software employs the latest in software technologies including: multi-core parallel processing, indexed cache files, workflow wizards, XML project files, multi-resolution tiling, and dB-based rendering to deliver advanced capabilities such as the innovative one-button mosaic feature.

MosaicOne images are created by simply dragging and dropping files of raw data files into the Triton Perspective multi-layer map view. On dual and multi-core PCs, high-resolution mosaics are produced in seconds rather than minutes. Innovative processing options such as nadir delete, far range clipping, and single-channel select, coupled with a comprehensive set of navigation processing tools, result in superior quality mosaics suited to specific application needs and collection regimes.

## Performance/Ease of Use

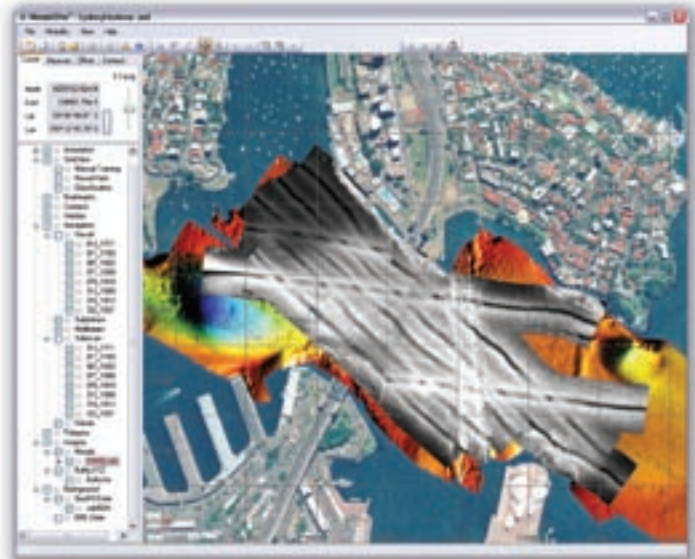
- Parallel software exploits multi-core processor architecture
- Performance scales with number of cores
- Fast setup, wizards, drag and drop
- One km<sup>2</sup>/minute per core production rate
- Interactive or batch processing

## Automation Tools

- Navigation processing
- Automatic nadir delete and fill from adjacent line
- Automatic range clipping
- Single channel auto-flip for consistent esonification direction and shadow consistency
- Move line manually to align features

## Display and Output

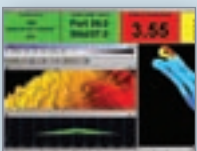
- dB-based imagery with high dynamic range
- dB-based imagery with high dynamic range
- Waterfall display of raw data with simple point and click (TVG, slant range correction, etc.)
- Annotation and drawing in graphic overlays
- High-resolution inserts of areas of interest
- Fusion with bathymetric images, aerial photos, coastline maps, and other geo-coded data
- Output as GeoTIFF images



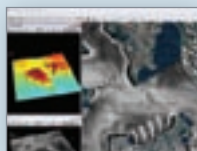
## Options

- Seabed segmentation/classification with Triton SeaClass™
- Target acquisition and processing with Triton TargetPro™
- Pipeline tracking and free-span detection with Triton PipeTrack™
- S-57 electronic nautical chart background

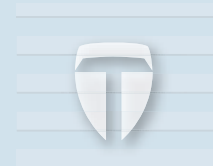
multibeam



sidescan



seismic



**TRITON**  
IMAGING®, INC