

# Triton SB-Interpreter™

*Processing, Analysis, and Interpretation of Subbottom Data*

Triton SB-Interpreter™ is a full-featured processing, analysis, and interpretation package for subbottom profiler and seismic data. The package consists of two primary components: a Map View and Profile Views. The Map View is populated with the vessel tracks as the SEG-Y data are loaded. Profile Views are launched from the Map View. A cursor link between the two windows correlates surface data with subsurface data. Processing capabilities include filtering of navigation, application of layback, and filtering/ correction of profile data -- either globally or on a per-line basis. Line crossings are shown in both the Map View and Profile Views. Reflectors may be digitized, edited, and exported according to user-defined parameters, either as reflector depths or unit thicknesses. A measurement tool is also available.

## User Interface

- Map View showing vessel tracks and background imagery.
- Profile View showing trace data and digitized reflectors.

## Map View Capabilities

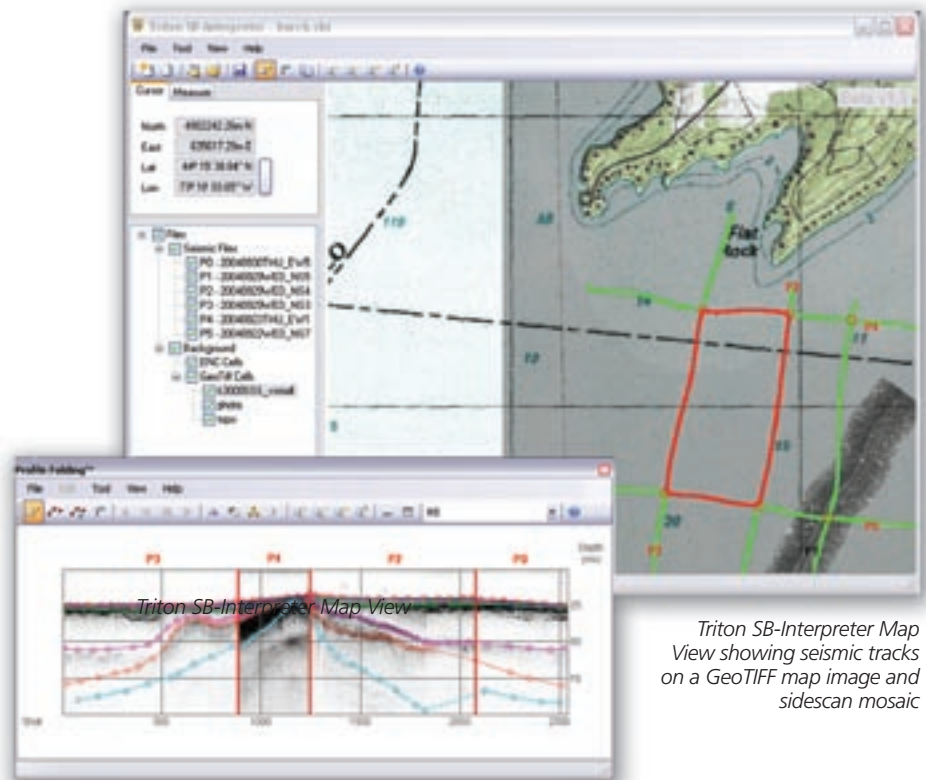
- Automated SEG-Y load and caching
- Automatic cross-line location
- Navigation filtering
- Layback calculation
- Cursor link to Profile View
- Project Save and Recover
- GeoTIFF image background

## Profile View Capabilities

- Image enhancement via Bandpass filter, TVG, AGC, and LUT
- Image reversal
- Pan and Zoom control
- Reflector creation and naming
- Reflector digitizing and editing
- Reflector / unit export as ASCII file
- Profiles management globally or individually
- Innovative ProfileFolding™ feature

## Optional Capabilities

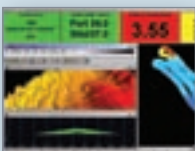
- GeoTiff images or S-57 charts displayed as background information.



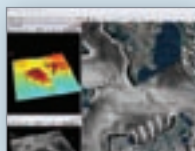
*Triton SB-Interpreter Map View showing seismic tracks on a GeoTIFF map image and sidescan mosaic*

*ProfileFolding™ view showing reflector digitization across multiple tracks*

multibeam



sidescan



seismic



TRITON  
IMAGING®, INC