

TritonMap™

GIS-based Mosaicking and Mapping

TritonMap™ is a GIS-based mosaicking and mapping package that interfaces with the Isis®, TargetPro™, and BathyPro™ applications to build multi-layer geo-referenced databases of side scan image mosaics, bathymetry DTMs, and target data. These data can be combined with other geocoded data sets such as satellite imagery, coastline maps, and electronic navigation charts, as required. TritonMap™ links with a number of other Triton modules including SeaClass™, PipeClass™, 3DViz™, and TritonNav™. The application supports multiple window views to allow correlation between different data sets, and can be used to produce charts while offshore. All data exported data products are in industry-standard formats.

User Interface

- Primary map display of all sonar data and historical data including mosaics, DTMs, contours, soundings, ENC charts, and other background imagery.
- Multi-layer, GIS architecture supporting separate window views for different layers, linked cursor displays, synchronized zoom levels, and data merging / fusion.

Tools

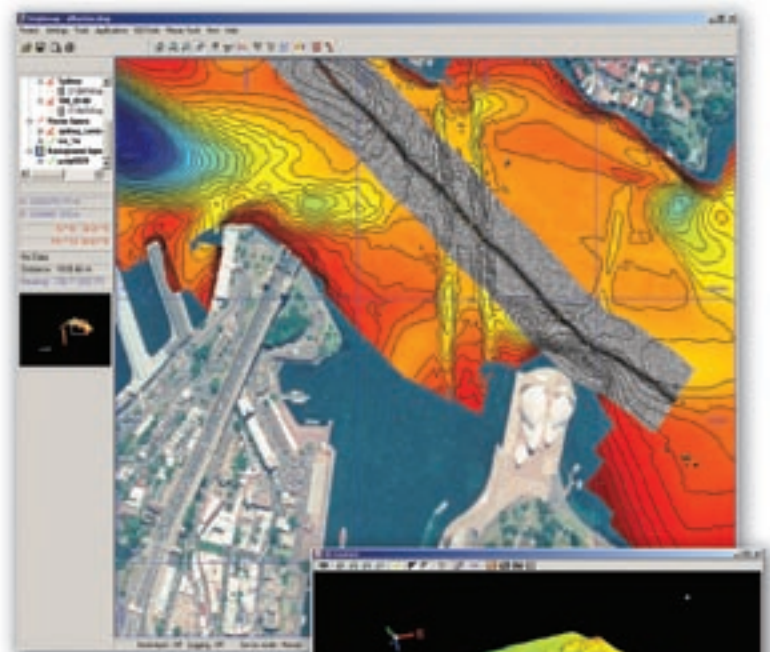
- Digitizing tool
- Profile tool for image layers
- Volume computation for DTM's
- Change detection for mosaics
- Measurement tools

Process Control

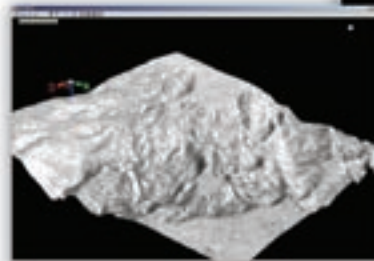
- Links to other Triton applications.
- Conversion of DXF / Shape / ASCII files for display of vector layers.
- Conversion of GeoTiff / BSB / S57 files for display of background imagery.

Options

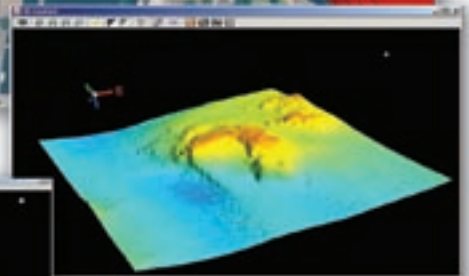
- Printing to any plotter with Windows driver for chart production.
- Support for S-57 chart display.



TritonMap User Interface

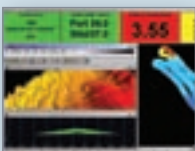


Snippet data draped on bathymetry

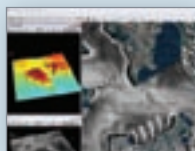


DTM displayed in 3DViz

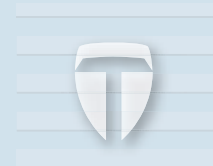
multibeam



sidescan



seismic



TRITON
IMAGING®, INC