

Triton Nav™

Survey Planning and Control

TritonNav™ is a full-featured navigation and survey planning package designed for performing high-quality surveys with maximum efficiency. TritonNav™ is a component of TritonMap™ thereby allowing real-time or historical survey data to be viewed relative current vessel position. TritonNav™ accepts navigation from up to two separate sources, with customizable data output to secondary systems. Survey planning within TritonNav™ can be either graphical or through importing coordinates from an ASCII file. Parallel and perpendicular lines may be created automatically relative to a base line. Numerous QC windows are available as well as alarms to notify operators of system problems. Support for the display of S-57 charts is available as an option.

User Interface

- Primary map display in TritonMap™.
- Survey Control Panel shows line plan.
- Survey Editor used to create line plan.

Sensor Interfaces

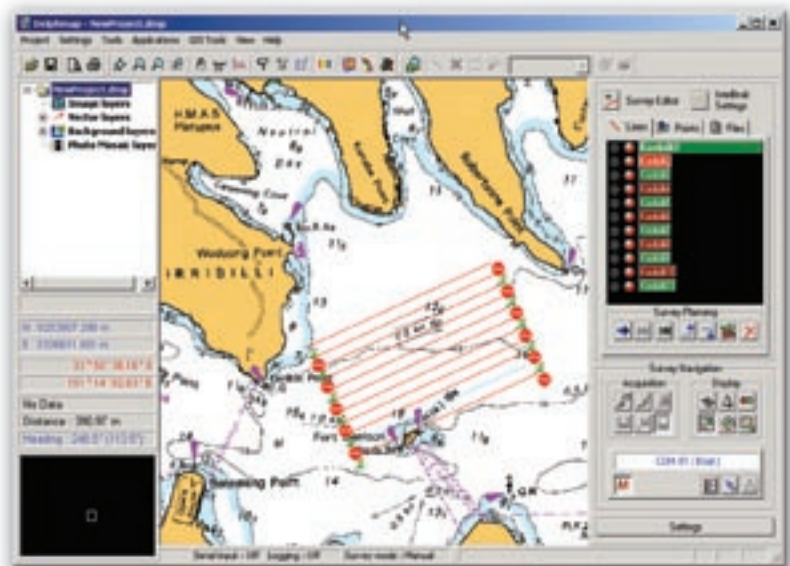
- Navigation Systems (serial / Ethernet)
- Motion Sensors
- Gyros
- Single Beam Echosounders
- Pressure Sensor

Quality Control Displays

- Helmsman Display
- Compass
- Single Beam Profiler (2 Channels)
- Alarms (user configurable)
- Text window

Advanced Capabilities

- Linkage to TritonMap™ for real-time data feed.
- Support for S-57 chart display.
- Multi-casting of QC displays on any networked computer.
- User-configurable output to any secondary systems via serial or Ethernet port.



TritonNav Survey Planning

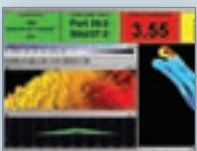


Helmsman Display

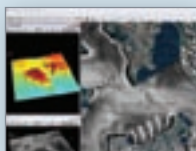


Compass Display

multibeam



sidescan



seismic



TRITON
IMAGING®, INC