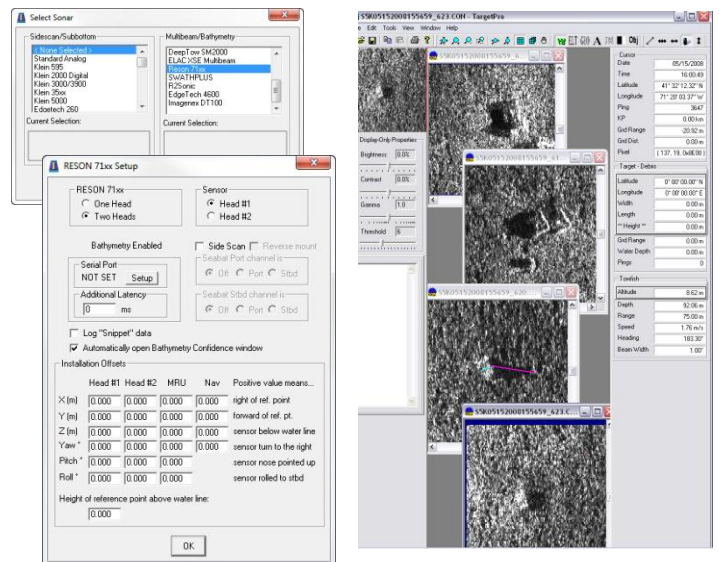
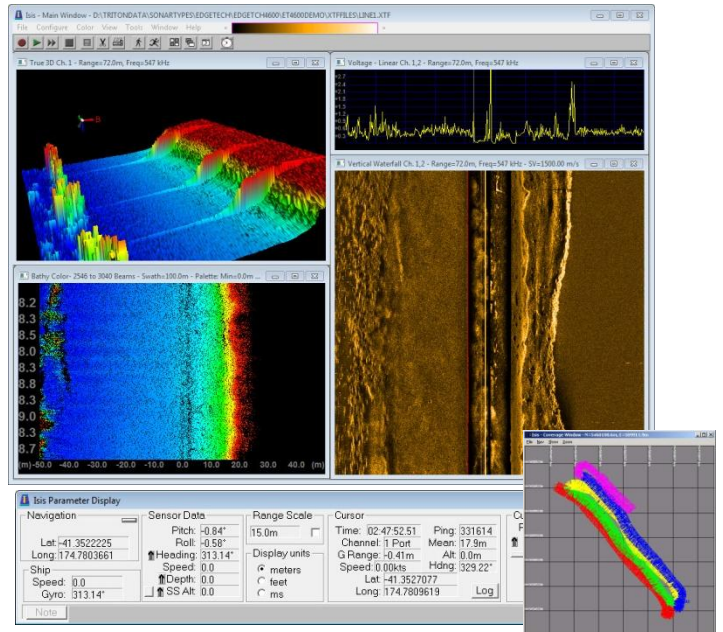


Isis Offshore-IFM™

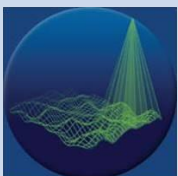
Interferometric Sonar Data Acquisition

Triton's new ISIS Offshore-IFM package is an integrated collection of Triton software modules that provides everything needed to accurately acquire and review data from most interferometric sonars. ISIS Offshore-IFM is designed around the easy-to-use, extensively field-tested core components of Triton's Isis® Sonar. The package integrates external sensors including GPS, gyros, and MRUs and correctly logs and geo-references sonar data into XTF files. Includes Triton's MBSS-Logger, Sonar Interface, TargetPro, Coverage Map, and Display and Alarm modules operating in an integrated environment with the following capabilities:

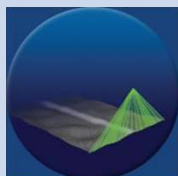
- Triton MBSS-Logger**
 - Logs sonar and motion data to industry-standard XTF files
 - Integrates external sensors (GPS, gyro, MRU, etc.)
 - Waterfall display of sidescan, bathymetry and backscatter/amplitude data
 - 3D Perspective bathymetry display with intensity data overlay
- Sonar Interface**
 - Most interferometric sonars supported (Edgetech 4600, Klein HydroChart, Teledyne Benthos C3D, etc.)
 - Control settings for all sonar operational parameters
- Coverage Map**
 - Display color coded navigation line with beamlines to show actual ground coverage
 - Automated zoom/pan options for mission monitoring
- TargetPro**
 - Target acquisition in sidescan waterfall
 - Image enhancement, measurement, analysis & classification
 - Export of target images and locations
- Real-time Graphical Displays & Alarms**
 - Real-time display of survey parameters
 - Graphs for motion, navigation, etc.
 - GPS quality alarms
 - Alarms for too shallow, not recording, storage limits, end of file, etc.
- Optional Survey Pro-IFM package**
 - Survey planning & monitoring
 - Real-time helmsman display
 - Real-time mosaics or bathymetry grids



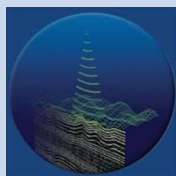
multibeam



sidescan



subbottom



TRITON
IMAGING, INC

AN ECA GROUP COMPANY 

(+1)831-722-7373

www.tritonimaginginc.com