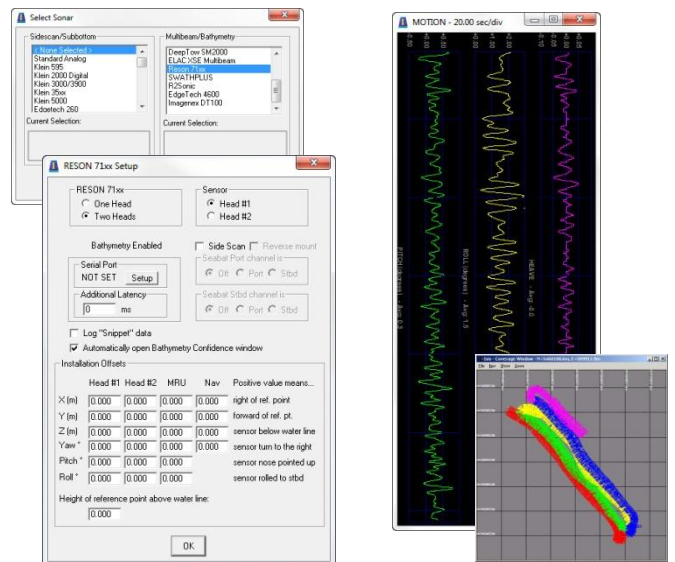
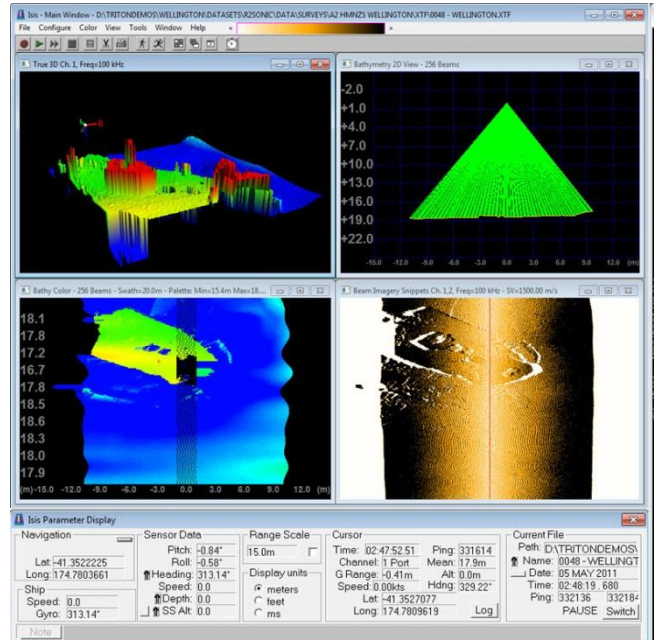


Isis Offshore-MBE™

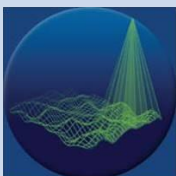
Multibeam Echosounder Data Acquisition

Triton's new ISIS Offshore-MBE package is an integrated collection of Triton software modules that provides everything needed to accurately acquire and review data from most multibeam sonars. ISIS Offshore-MBE is designed around the easy-to-use, extensively field-tested core components of Triton's Isis® Sonar. The package integrates external sensors including GPS, gyros, and MRUs and correctly logs and geo-references sonar data into XTF files. Includes Triton's MB-Logger, Sonar Interface, Coverage Map, and Display and Alarm modules operating in an integrated environment with the following capabilities:

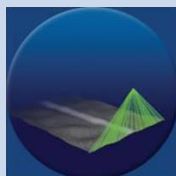
- Triton MB-Logger**
 - Integrates external sensors (GPS, gyro, MRU, etc.)
 - Logs sonar and motion data to industry-standard XTF files
 - Waterfall display of bathymetry and backscatter/sidescan
 - 3D Perspective bathymetry display
- Sonar Interface**
 - Most multibeam and interferometric sonars supported (Kongsberg, Teledyne Reson, R2Sonic, Norbit, Teledyne Odom, etc.)
 - Control settings for all sonar operational parameters
- Coverage Map**
 - Display color coded navigation line with across track beamlines to show actual ground coverage
 - Automated zoom/pan options for mission monitoring
- Real-time Graphical Displays & Alarms**
 - Real-time display of important survey parameters
 - Graphs for pitch, roll, heave, speed, navigation, etc.
 - GPS quality alarms
 - Alarms for shallow, not recording, storage limits, end of file, etc.
- Optional Survey Pro-MBE package**
 - Survey planning & monitoring
 - Real-time helmsman display
 - Real-time gridded bathymetry



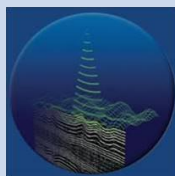
multibeam



sidescan



subbottom



TRITON
IMAGING, INC.

AN ECA GROUP COMPANY 

(+1)831-722-7373

www.tritonimaginginc.com