

Isis Offshore-SBP™

High-Resolution Seismic Data Acquisition

Triton's new ISIS Offshore-SBP package is an integrated collection of Triton software modules that provides everything needed to accurately acquire and review high-resolution seismic data from most subbottom profilers and analog sparker boomer systems. ISIS Offshore-SBP is designed around the easy-to-use, extensively field-tested core components of Triton's innovative SB-Logger software. The package integrates external sensors including GPS and gyros and correctly logs and geo-references seismic data into industry-standard SEGY files. Includes Triton's SB-Logger, Sonar Interface, Printing, and Advanced Filtering modules operating in an integrated environment with the following capabilities:

- **Triton SB-Logger**

- Integrates external sensors (GPS, gyro, etc.)
- Seismic profile display during acquisition and replay
- Unique pause feature permits data review with no interruption of real-time data acquisition
- Automatic recording delay change based on real-time echosounder input
- Logs subbottom data to standard SEGY files
- Simple video-like playback controls (pause, reverse, mirror, etc.)
- Instant application of filter / gradient changes to entire profile
- Scrubbing tool for rapid scanning of data files
- Image capture tool for export of profile sections

- **Sonar Interface**

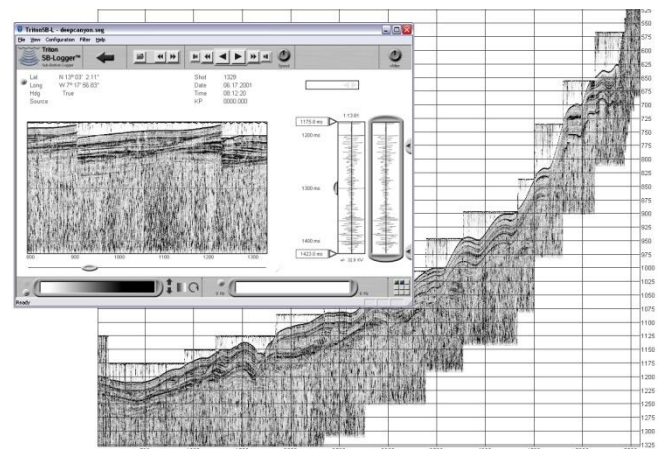
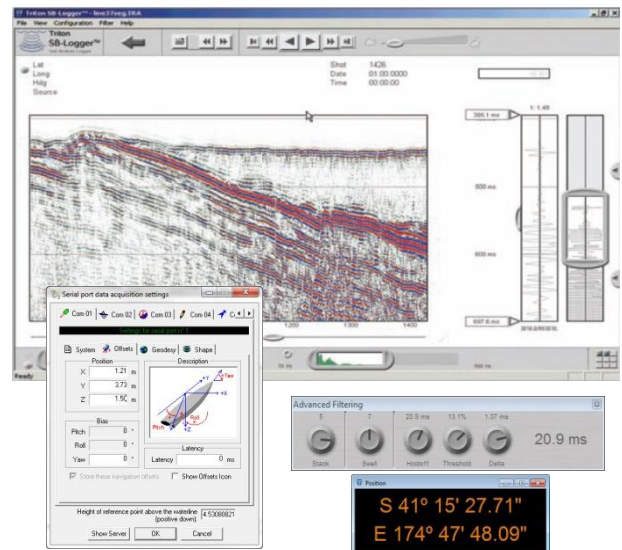
- Most modern digital subbottom profilers supported (Klein, Edgetech, Teledyne, GeoAcoustics, etc.)
- Control settings for range, frequency, etc.
- Optional analog interface hardware for sparker/boomer systems

- **Printing Module**

- On-line or off-line hardcopy printing
- EPC, Geoprinter/Alden, and ISYS printers supported
- Annotations: shot, time, position, events

- **Advanced Filters**

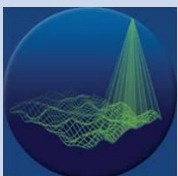
- Bandpass and Notch filters
- TVG / AGC
- Variable gain control
- Topographic and depth correction
- Bottom Tracking
- Swell removal
- Horizontal stacking



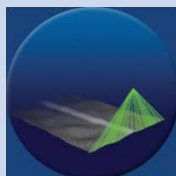
- **Optional Survey Pro-SBP package**

- Survey planning & monitoring
- Real-time helmsman display

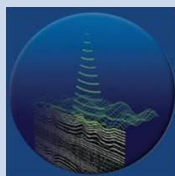
multibeam



sidescan



subbottom



TRITON
IMAGING, INC.

AN ECA GROUP COMPANY 