

Isis Offshore / Survey Pro-SBE™

Singlebeam Echosounder Acquisition and Survey Support

Triton's new combined Isis Offshore and SurveyPro-SBE package is an integrated collection of Triton software modules that supports the data acquisition, line planning, survey execution, and quality control for surveys conducted with singlebeam echosounder sonars. This package is designed to provide everything needed to plan and conduct a quality bathymetric survey. Included in this package are Triton Nav and Triton Map, and a real-time 2D profile display for data QC.

ACQUISITION, PLANNING AND REAL-TIME CONTROL

- **Triton Nav**

Data Acquisition

- Serial or UDP connection to sonar
- 2D real-time data display
- GPS quality alarms

Survey Planning

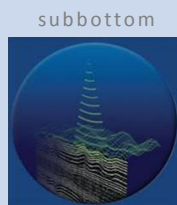
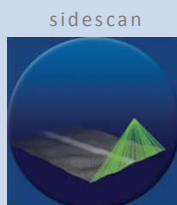
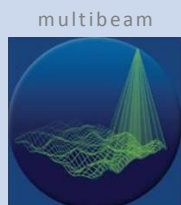
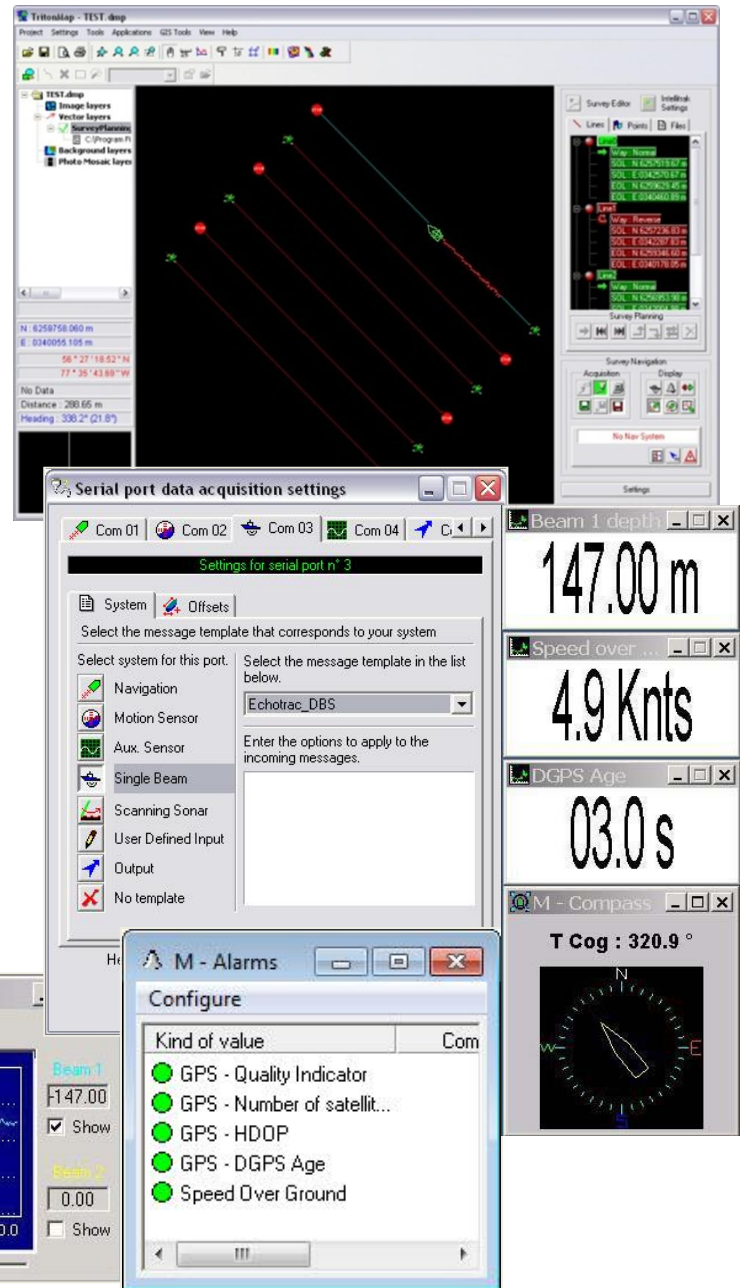
- Graphical survey line-plan creation
- Map-based environment integrated with other geo-coded data (GeoTIFFs, DXF, DTMs)

Helmsman Display

- GPS and gyro input
- Real-time display: distance to end of current line, start of next line, compass rose, distance and direction off line, course to waypoint, etc.
- User-configurable alarms to monitor: GPS quality and age, vessel speed & attitude

- **Triton Map**

- Multi-layer, map-based display of bathy DTMs, contours, and soundings co-registered with other geo-coded survey data
- Ship, fish position, heading and sonar range updated in real-time in Triton Map



TRITON
IMAGING, INC

AN ECA GROUP COMPANY