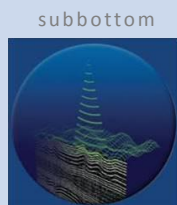
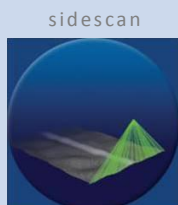
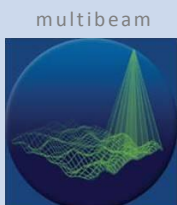
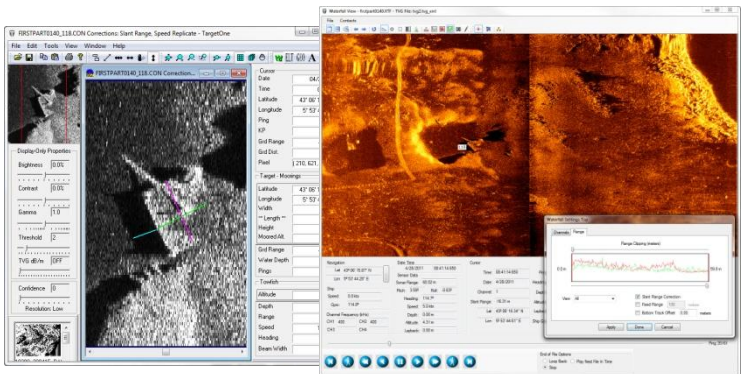
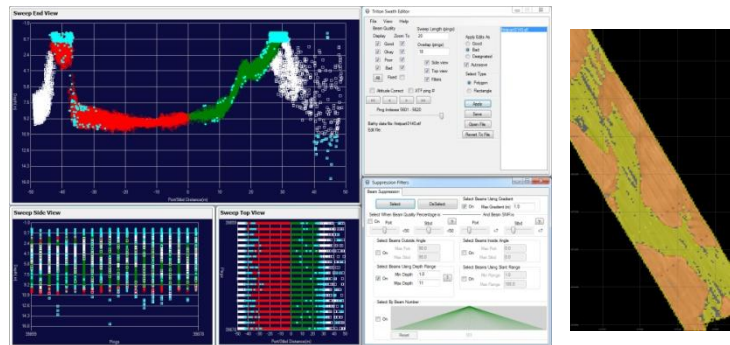
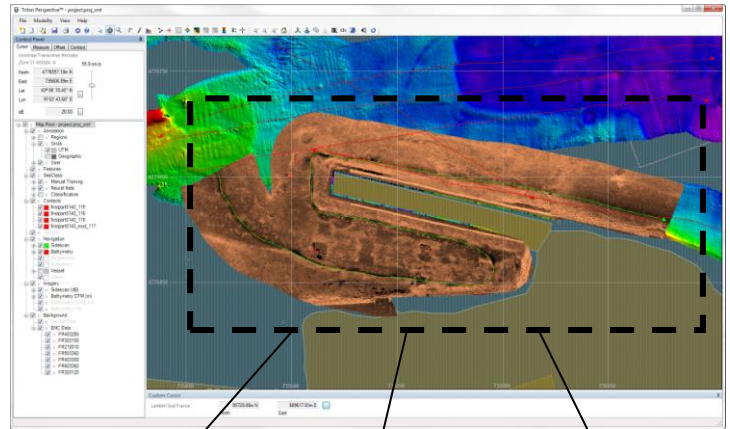


Perspective-IFM™

Interferometric Data Processing and Advanced Interpretation

A complete software tool set for production processing of sidescan and bathymetry data from interferometric sonars. Designed around Triton's unique Perspective architecture, this package is easy to use, versatile, produces sidescan mosaics of the highest quality, and delivers fast throughput on very large survey data sets. Includes Triton's Perspective Map, BathyOne, 2D/3D sounding editors, MosaicOne, TargetOne, and SeaClass modules operating in an integrated environment with the following capabilities:

- Perspective Map**
 - Multi-layer, GIS-based display of geo-coded survey data (vectors, GeoTIFFs, ENC, etc.)
 - Custom projection display of cursor position
 - Annotation tools for text and drawings
 - Immediate access to raw sidescan waterfall display with double-click on survey line
- BathyOne**
 - Drag and drop / wizard-based processing
 - Uses multiple processor threads for quickly processing large data volumes
 - Interactive navigation processing
 - Tides, SVP, squat, sensor offsets
 - Grid export to BAG, XYZ, & GeoTIFF
- Swath Editor**
 - Multiple views of data plus cursor link with map view for enhanced interpretation
 - Select sounding to flag as bad using beam filters or by manual selection
- MosaicOne**
 - Waterfall annotation tool for identifying objects or delineating lines and areas
 - dB-based imagery for superior quality
 - Unique fine-tune TVG tool
 - Merge-line and move line tools
 - GeoTIFF output of mosaic images
- TargetOne**
 - Target acquisition from mosaic in map[view or from the waterfall display
 - Image enhancement, measurement, analysis & classification
 - ASCII and PDF exports
- SeaClass**
 - Automatically characterizes bottom type from a sidescan mosaic or GeoTIFF
 - Neural Net architecture
 - User-defined training sets



TRITON
IMAGING, INC

AN ECA GROUP COMPANY