

Perspective-MB™

Multibeam Data Visualization and Production Processing

A complete software tool set for production processing of multibeam and interferometric sonar data. Designed around Triton's unique Perspective architecture, this package is easy to use, versatile, produces processed bathymetric data products of the highest quality, and delivers rapid throughput on very large survey data sets. Includes Triton's Perspective Map, BathyOne, 2D swath & 3D area editors, and A-B modules operating in an integrated environment with the following capabilities:

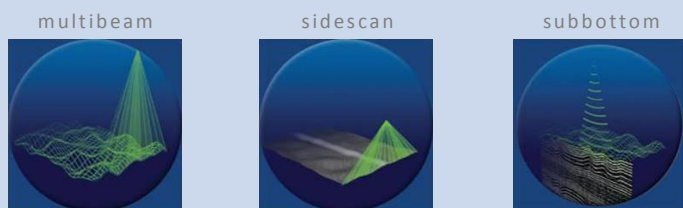
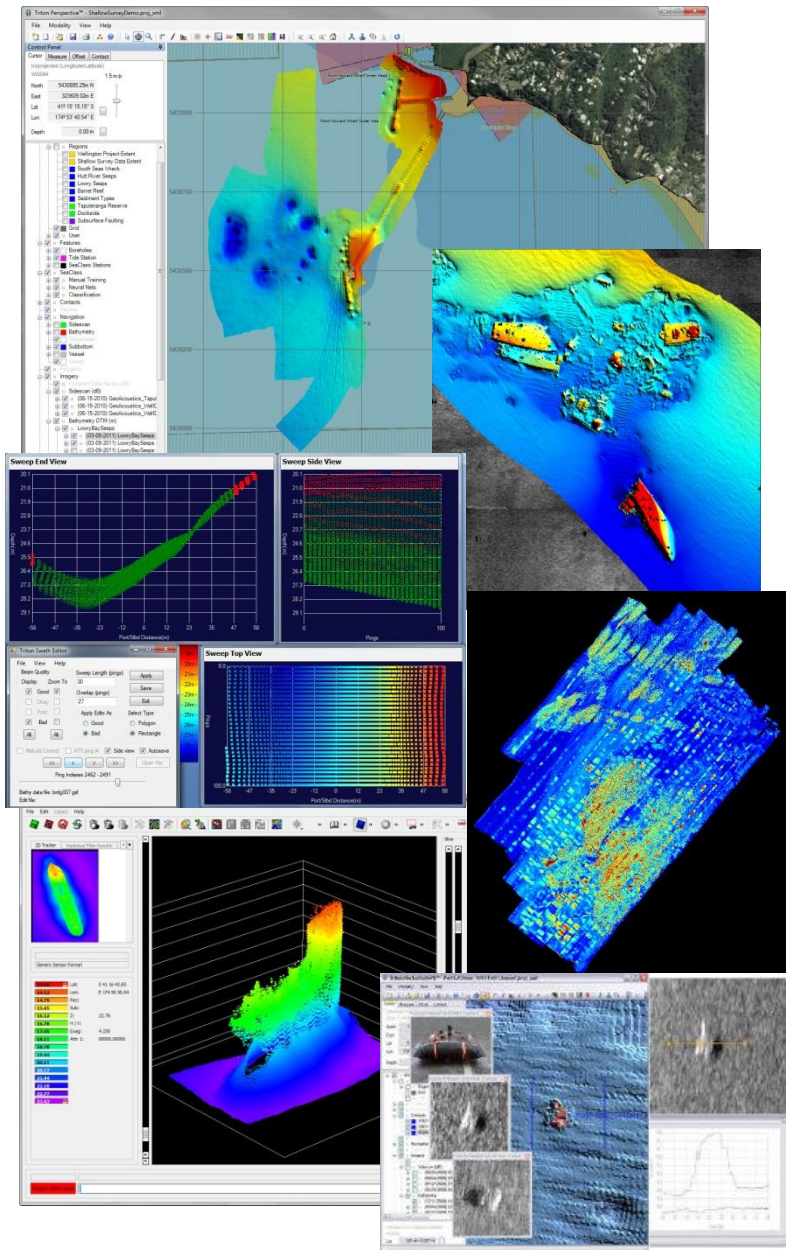
- **Perspective Map**
 - Multi-layer, GIS-based display of geo-coded survey data (vector coastlines, GeoTIFF images, contours, soundings, ENCs, etc.)
 - Custom projection display of cursor position
 - Annotation tools for text and drawings
 - Common GIS environment with sidescan and subbottom processing software, Perspective-SS and Perspective-SB

- **BathyOne**
 - Drag and drop / wizard-based processing
 - Uses multiple processor threads for quickly processing large data volumes
 - Interactive navigation processing
 - Tides, SVP, squat, sensor offsets
 - Fully processed soundings are saved in GSF file format for each line processed
 - Grid soundings using Triton DTM gridding method or CCOM's CUBE algorithm
 - Grid export to BAG, XYZ, & GeoTIFF

- **3D PFM Editor**
 - Area based editor developed by NAVO and integrated in Perspective
 - Manually edit beam flags or use statistical filter for automated results
 - Color by depth, line number, or uncertainty
 - Slicing option for editing inside structures

- **Swath Editor**
 - Easy access to all sounding data from double-click on survey line in Map display
 - Multiple views of data plus cursor link with map view for enhanced interpretation

- **Change Detection**
 - A-B differencing of bathy layers
 - Change-based object detection method
 - Difference layer for dredge volumes
 - Profile view for comparing multiple grids



TRITON
IMAGING, INC

AN ECA GROUP COMPANY 

(+1)831-722-7373

www.tritonimaginginc.com