

Perspective-SB™

High-Resolution Seismic Data Visualization and Interpretation

A complete software tool set for production processing of high-resolution seismic and subbottom profiler data. Designed around Triton's unique Perspective architecture, this package is easy to use, versatile, produces processed seismic data products of the highest quality, and delivers rapid throughput on very large survey data sets. Includes the Perspective Map and SB-Interpreter Profile View, Reflector Digitizing, and Borehole modules operating in an integrated environment with the following capabilities:

- **Perspective Map**

- Multi-layer, GIS-based display of geo-coded survey data (vector coastlines, GeoTIFF images, sidescan mosaics, bathymetry grids, contours, ENC's, etc.)
- Custom projection display of cursor position
- Automated SEG-Y load and caching
- Automatic cross-line location
- Navigation filtering
- Immediate access to seismic Profile View with double click on survey line
- Common GIS environment with multibeam and sidescan software, Perspective-MB and Perspective-SS

- **Profile View**

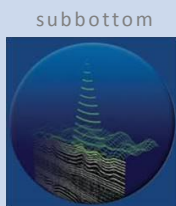
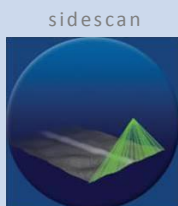
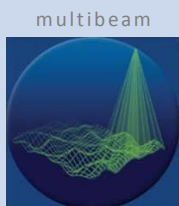
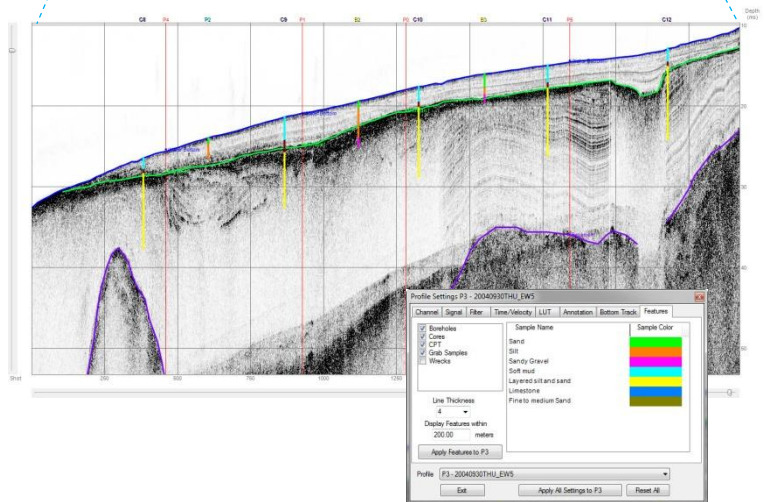
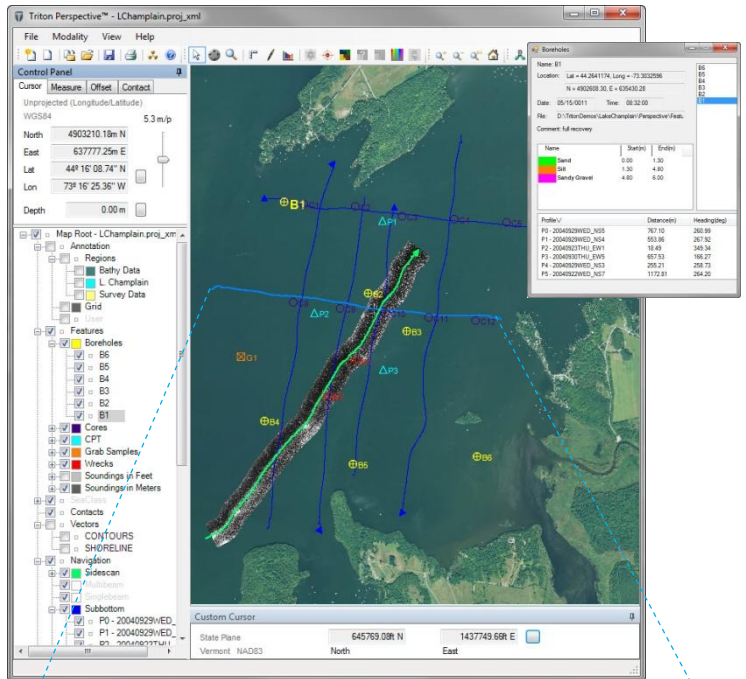
- Displays trace data & digitized reflectors
- Image enhancements: Bandpass filter, TVG, AGC, and LUT
- Cross-line indicators
- Image reversal, pan and zoom control
- Profile Folding fence diagrams
- Measure distance and slope

- **Reflector Digitizing**

- Bottom track used for seabed reflector
- Swell filter to remove heave from display
- Reflector digitizing and editing tools
- Reflector ASCII export: position, depth, start/end indicator, trace sequence number, original field number, trace number within field record, CDP ensemble number, and trace ID code.

- **Borehole/Point Files**

- Import geo-located ASCII data: borehole, cone penetrometer, grab samples, etc.
- Position shown on Map View
- Lithology projected on subbottom profiles



TRITON
IMAGING, INC

AN ECA GROUP COMPANY

(+1)831-722-7373

www.tritonimaginginc.com