

ProcessPro-MBE™

Multibeam Data Processing

Triton's new ProcessPro-MBE software package for multibeam processing is designed for users who only need a simple processing solution without CUBE, quality control grid layers and 3D area editing. This package is built around Triton's BathyPro software for data processing with Triton's Swath Editor for sounding editing and Perspective Map included for data visualization. This is Triton's low cost multibeam processing solution, with everything needed to produce high quality results including the following software modules and capabilities:

- **BathyPro**

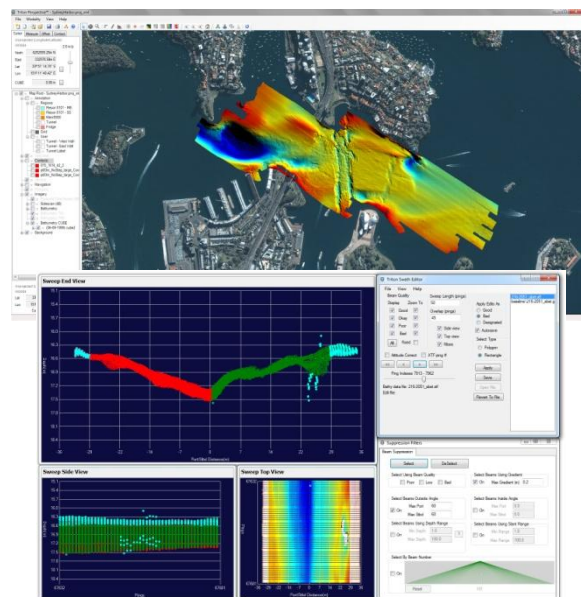
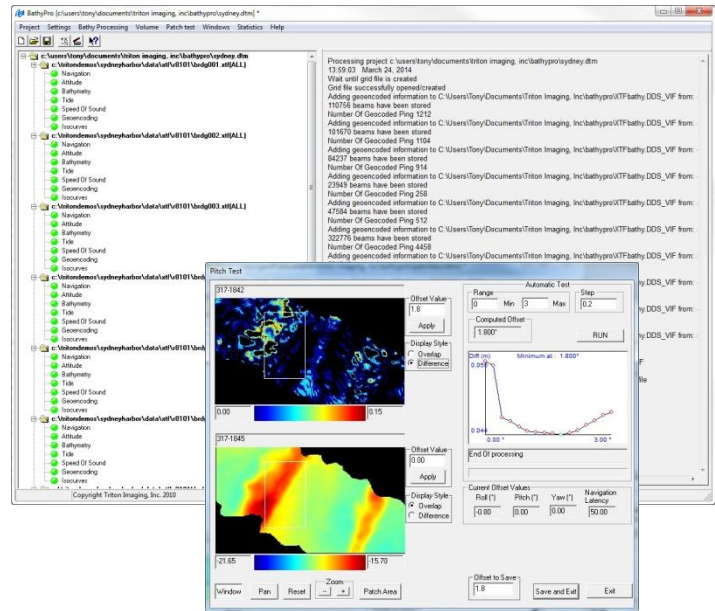
- Navigation and attitude data processing filters
- Apply Tides, SVP, and Squat correction
- Apply sensor geometry offsets
- Includes Patch Test Utility
- Beam suppression filters
- Save chart soundings, user flagged soundings and/or hardware flagged soundings as DXF or ASCII files
- Grid soundings using standard gridding method or using a TIN model
- Generate bathymetry contours
- Export processed data to XYZ, DXF and/or Triton DDS_VIF formatted files

- **Perspective Map**

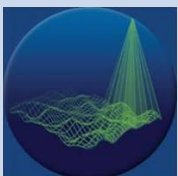
- Multi-layer, GIS-based display of geo-coded survey data (vector coastlines, GeoTIFF images, contours, soundings, ENC's, etc.)
- Load processed multibeam data as XYZ, DXF, or as Triton DDS-VIF formatted files
- Bathymetry cross section profile tool
- Custom projection display of cursor position
- Common GIS environment with sidescan and subbottom processed results

- **Swath Editor**

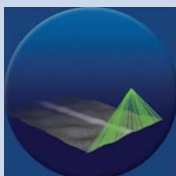
- Easy access to all sounding data from double-click on survey lines in Perspective Map display
- Multiple views of data plus cursor link with map view for enhanced interpretation
- Select sounding to flag as bad using beam filters or by manual selection



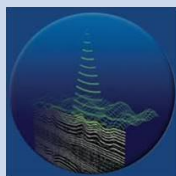
multibeam



sidescan



subbottom



TRITON
IMAGING, INC.

AN ECA GROUP COMPANY 

(+1)831-722-7373

www.tritonimaginginc.com