

ProcessPro-SBE™

Singlebeam Data Processing

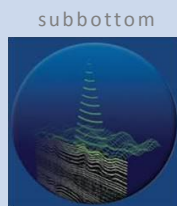
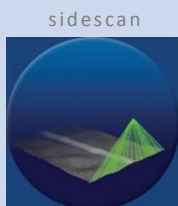
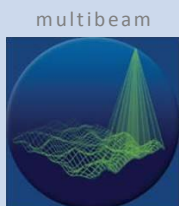
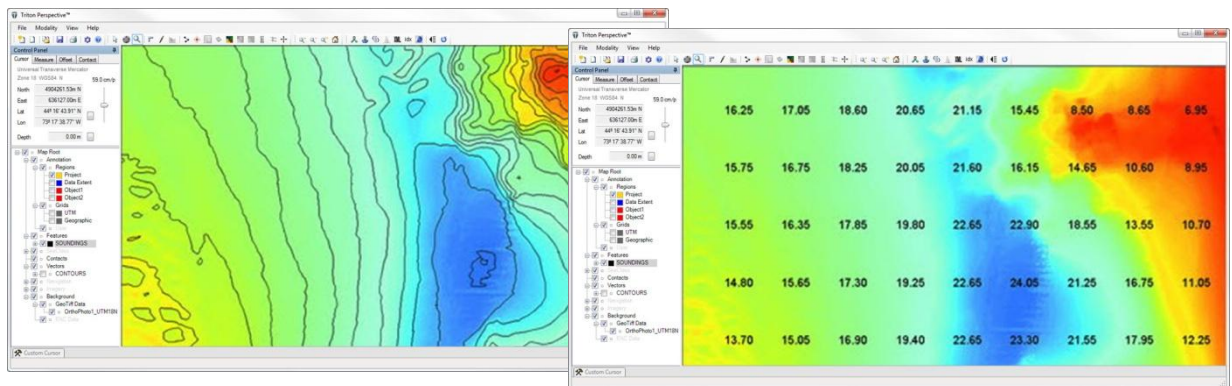
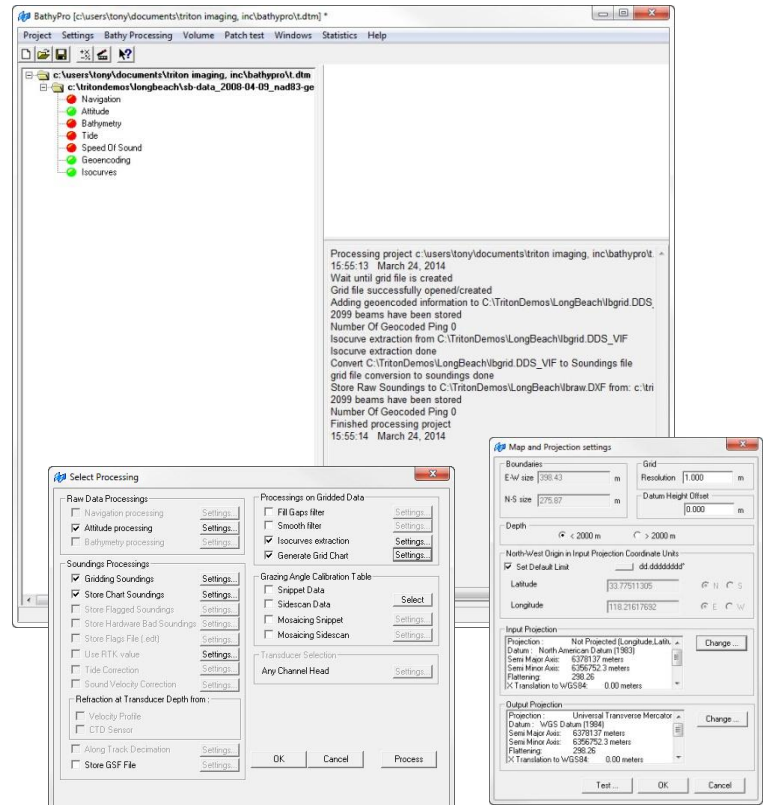
Triton's new ProcessPro-SBE software package for singlebeam processing offers a powerful solution for data processing and visualization. This package is built around Triton's BathyPro software for data processing which includes TIN modeling for accurately modeling the seafloor, and includes Perspective Map for data visualization. Triton's singlebeam processing package contains everything needed to produce high quality results and includes the following software modules and capabilities:

- **BathyPro**

- Navigation and attitude data processing filters
- Apply Tides, SVP, and sensor offsets
- Beam suppression filters
- Save chart soundings, user flagged soundings and/or hardware flagged soundings as DXF or ASCII files
- Grid soundings using standard gridding method or using a TIN model
- Generate bathymetry contours
- Export processed data to XYZ, DXF and/or Triton DDS_VIF formatted files

- **Perspective Map**

- Multi-layer, GIS-based display of geocoded survey data (vector coastlines, GeoTIFF images, contours, soundings, ENCs, etc.)
- Load processed multibeam data as XYZ, DXF, or as Triton DDS-VIF formatted files
- Bathymetry cross section profile tool
- Custom projection display of cursor position
- Annotation tools for text and drawings
- Common GIS environment with sidescan and subbottom processed results



TRITON
IMAGING, INC

AN ECA GROUP COMPANY

(+1)831-722-7373

www.tritonimaginginc.com