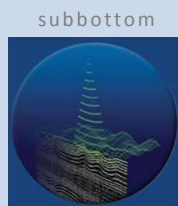
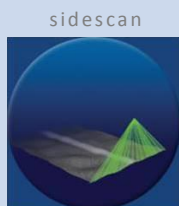
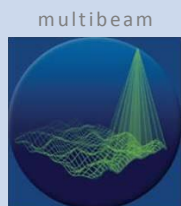
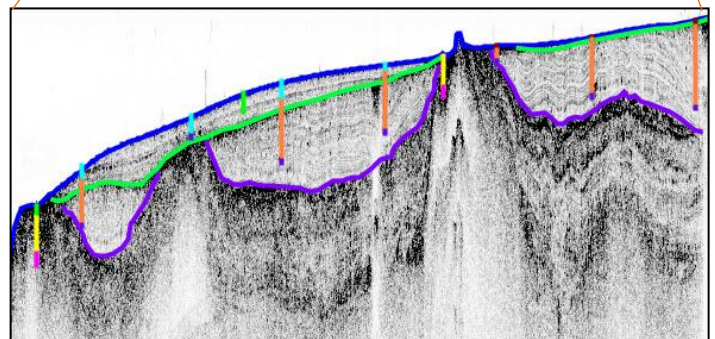
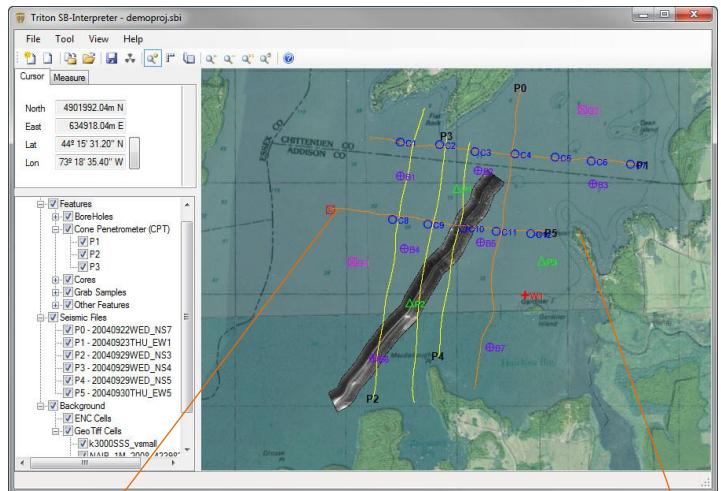


ProcessPro-SBP™

Subbottom Data Processing and Interpretation

Triton's new ProcessPro-SBP software package for subbottom data processing utilizes Triton's SB-Interpreter software for applying data signal filters and digitizing reflectors, with the SB-Interpreter map view for viewing the survey lines and project files in a GIS environment. This package is designed for users who have existing SB-Interpreter project files they need to work with, or for users looking for a low cost subbottom processing solution. This package includes everything needed to produce high quality results and includes the following capabilities:

- **SB-Interpreter Map View**
 - Multi-layer, GIS-based display of geo-coded survey data (vector coastlines and contours, GeoTIFF images, and background ENCs)
 - Automated SEG-Y load and caching
 - Automatic cross-line location
 - Navigation filtering
 - Immediate access to seismic Profile View with double click on survey line
- **Subbottom Profile View**
 - Displays trace data & digitized reflectors
 - Image enhancements: Bandpass filter, TVG, AGC, and LUT
 - Cross-line indicators
 - Image reversal, pan and zoom control
 - Profile Folding fence diagrams
 - Measure distance and slope
- **Reflector Digitizing**
 - Bottom track used for seabed reflector
 - Swell filter to remove heave from display
 - Reflector digitizing and editing tools
 - Reflector ASCII export: position, depth, start/end indicator, trace sequence number, original field number, trace number within field record, CDP ensemble number, and trace ID code.
- **Borehole/Point Files**
 - Import geo-located ASCII data: borehole, cone penetrometer, grab samples, etc.
 - Position shown on Map View
 - Lithology projected on subbottom profiles



TRITON
IMAGING, INC

AN ECA GROUP COMPANY 

(+1)831-722-7373

www.tritonimaginginc.com