

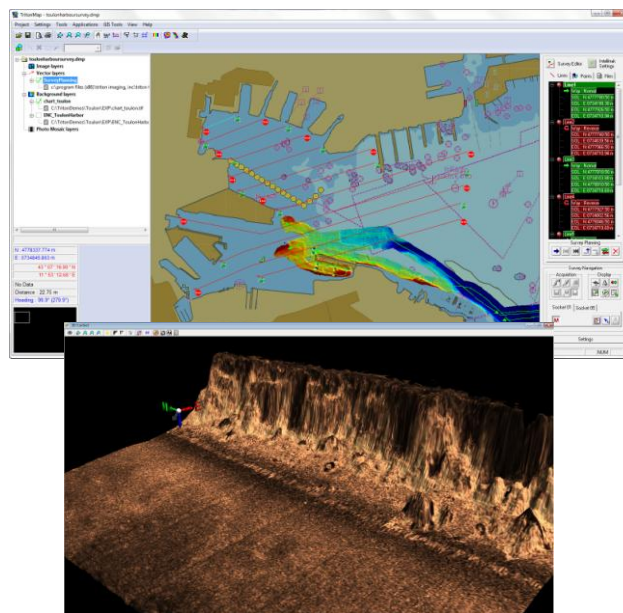
# Survey Pro-IFM™

Interferometric Sonar Survey Support and QC/Basic Processing

Triton's new SurveyPro-IFM package is an integrated collection of Triton software modules that supports the planning, execution, and real-time QC data processing for surveys conducted with interferometric sonars. SurveyPro-IFM is designed to be used in conjunction with ISIS Offshore-IFM for data acquisition and provides everything needed to plan and conduct a high quality surveys with interferometric sonars. This package provides data processing for both real-time QC analysis, and also for basic post-mission processing. SurveyPro-IFM includes Triton Nav, Real-Time Mosaic, MosaicPro, Real-Time Bathy, BathyPro, Triton Map, and 3DViz modules operating as an integrated unit with the following capabilities:

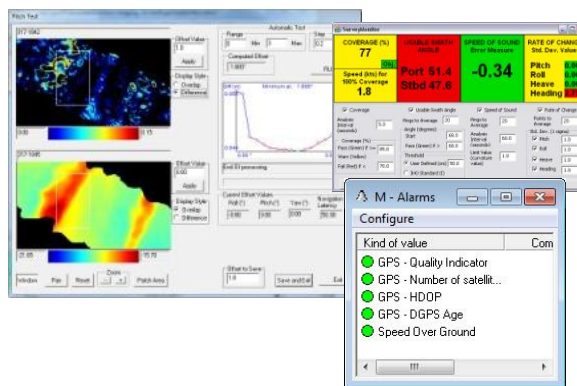
## SURVEY PLANNING AND REAL-TIME CONTROL

- **Triton Nav**
  - Survey Planning*
    - Graphical survey line-plan creation
    - Map-based environment integrated with other geo-coded data (GeoTIFFs, DXF coastlines, Bathy DTMs)
  - Helmsman Display*
    - GPS and gyro input
    - Real-time display: distance to end of current line, start of next line, compass rose, distance and direction off line, course to waypoint, etc.
    - User-configurable alarms to monitor: GPS quality and age, vessel speed, and vessel attitude
  - Map Display*
    - Ship, fish position, heading and sonar range updated in real-time in Triton Map
- **Real-Time Bathy & Real-time Mosaic**
  - Generate sidescan mosaics or bathymetric grids in real-time during data acquisition
  - Processed data continuously updated with vessel position

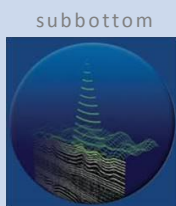
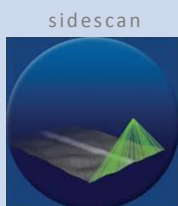
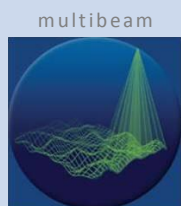


## BASIC SURVEY DATA PROCESSING

- **BathyPro & MosaicPro**
  - Off-line basic processing modules
  - Navigation processing and smoothing tools
  - Process sidescan and bathymetric data
  - Patch Test Utility
  - Filters and TVG corrections for mosaics
  - Beam suppression, tide and sound velocity corrections for bathymetry grids
- **3DViz**
  - 3D perspective viewing of bathymetry data with option to drape sidescan over the 3D terrain



- **Triton Map**
  - Multi-layer, map-based display of bathy DTMs, contours, and soundings co-registered with other geo-coded survey data
  - Export DTMs as GeoTIFF images or xyz grid files



TRITON  
IMAGING, INC

AN ECA GROUP COMPANY