

# Survey Pro-SBP™

High-Resolution Seismic Survey Support

Triton's new SurveyPro-SBP package is an integrated collection of Triton software modules that supports the planning, execution, and quality control for subbottom profiler surveys. It is designed to be used in conjunction with the Triton subbottom data acquisition package, ISIS Offshore-SBP. SurveyPro-SBP provides everything needed to plan and conduct a high-resolution seismic survey. Includes the Triton Nav and Triton Map modules operating in an integrated environment with the following capabilities:

## SURVEY PLANNING AND REAL-TIME CONTROL

### • Triton Nav

#### Survey Planning

- Graphical survey line-plan creation
  - Draw survey lines & points
  - Duplicate lines
  - Channel design
  - Import plans in ASCII format
  - Save and recall plans
- Map-based drawing environment

#### Helmsman Display

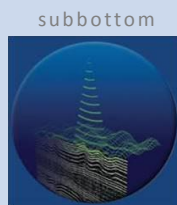
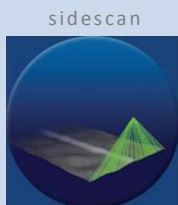
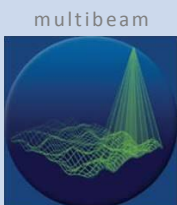
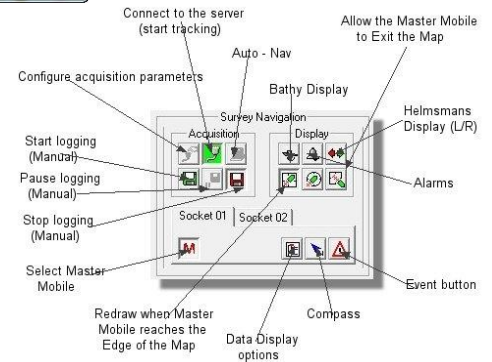
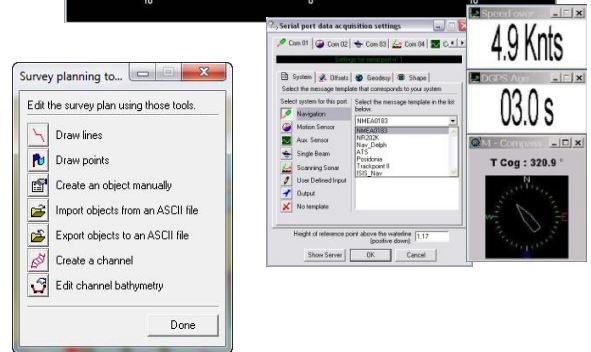
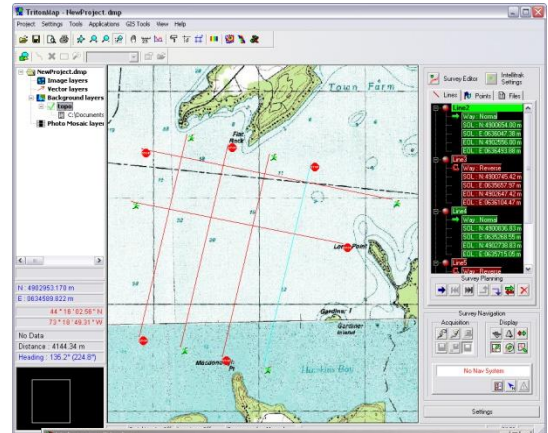
- GPS and gyro input
  - Standard NMEA and custom format
  - Serial and network interfaces
- Real-time display:
  - Distance to end of current line
  - Start of next line
  - Compass rose with heading
  - Distance and direction off line
  - Course to waypoint
  - Course to steer
  - Speed over ground
- User-configurable monitors/alarms:
  - GPS quality and age
  - Vessel speed
  - Vessel attitude

#### Map Display

- Real-time display of ship position, fish position, heading, sonar range, and history tracks in Triton Map

### • Triton Map

- Multi-layer, map-based display of survey tracks and real-time vessel and ship position co-registered with other survey data (e.g. vector coastlines, GeoTIFF images, sidescan mosaics, bathy DTMs, contours, etc.).
- S57 ENC background charts (optional)



TRITON  
IMAGING, INC

AN ECA GROUP COMPANY