

Survey Pro-SSS™

Sidescan Survey Support and QC/Basic Processing

Triton's new SurveyPro-SSS package is an integrated collection of Triton software modules that supports the planning, execution, and real-time QC data processing for sidescan sonar surveys. SurveyPro-SSS is designed to be used in conjunction with ISIS Offshore-SSS for data acquisition and provides everything needed to plan and conduct a high quality sidescan survey. This package provides data processing for both real-time QC analysis, and also for basic post-mission processing. SurveyPro-SSS includes Triton Nav, Real-Time Mosaic, MosaicPro, and Triton Map modules operating as an integrated unit with the following capabilities:

SURVEY PLANNING AND REAL-TIME CONTROL

- **Triton Nav**

Survey Planning

 - Graphical survey line-plan creation
 - Map-based environment integrated with other geo-coded data (GeoTIFFs, DXF coastlines, Bathy DTMs, optional S57 ENC's)

Helmsman Display

 - GPS and gyro input
 - Real-time display of distance to end of current line, start of next line, compass rose with heading, distance and direction off line, course to waypoint, course to steer, and speed over ground
 - User-configurable alarms to monitor: GPS quality and age, vessel speed, and vessel attitude

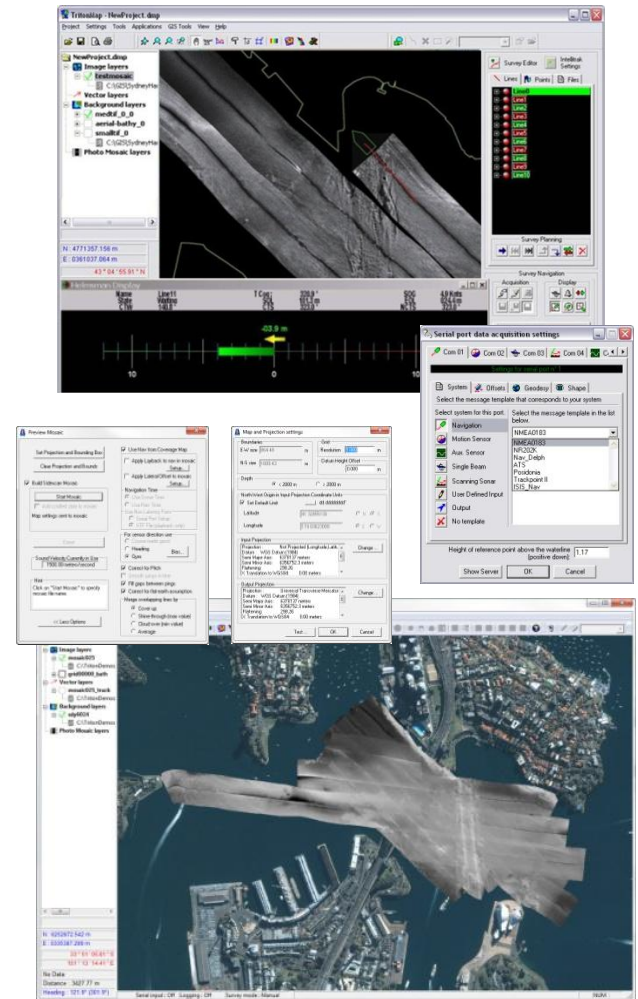
Map Display

 - Ship, fish position, heading and sonar range updated in real-time in Triton Map

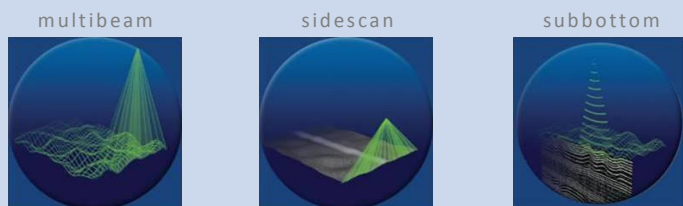
- **Real-Time Mosaic**
 - Generate sidescan mosaics in real-time during data acquisition
 - Mosaic continuously updated in the Triton Map display showing vessel position, towfish position, survey track lines, etc.

BASIC SIDESCAN DATA PROCESSING

- **MosaicPro**
 - Off-line basic mosaic creation module
 - Navigation processing and smoothing tools
 - Lines may be moved relative to one-another and displayed in either "cover-up" or "shine-through" mode
 - Filters and TVG corrections
 - Mosaics created and displayed in Triton Map



- **Triton Map**
 - Multi-layer, map-based display of mosaic imagery co-registered with other geo-coded survey data (e.g. survey lines, vessel and fish tracks, vector coastlines, GeoTIFF images, bathy gridded data, bathy contours or soundings, etc.)



TRITON
IMAGING, INC

AN ECA GROUP COMPANY 