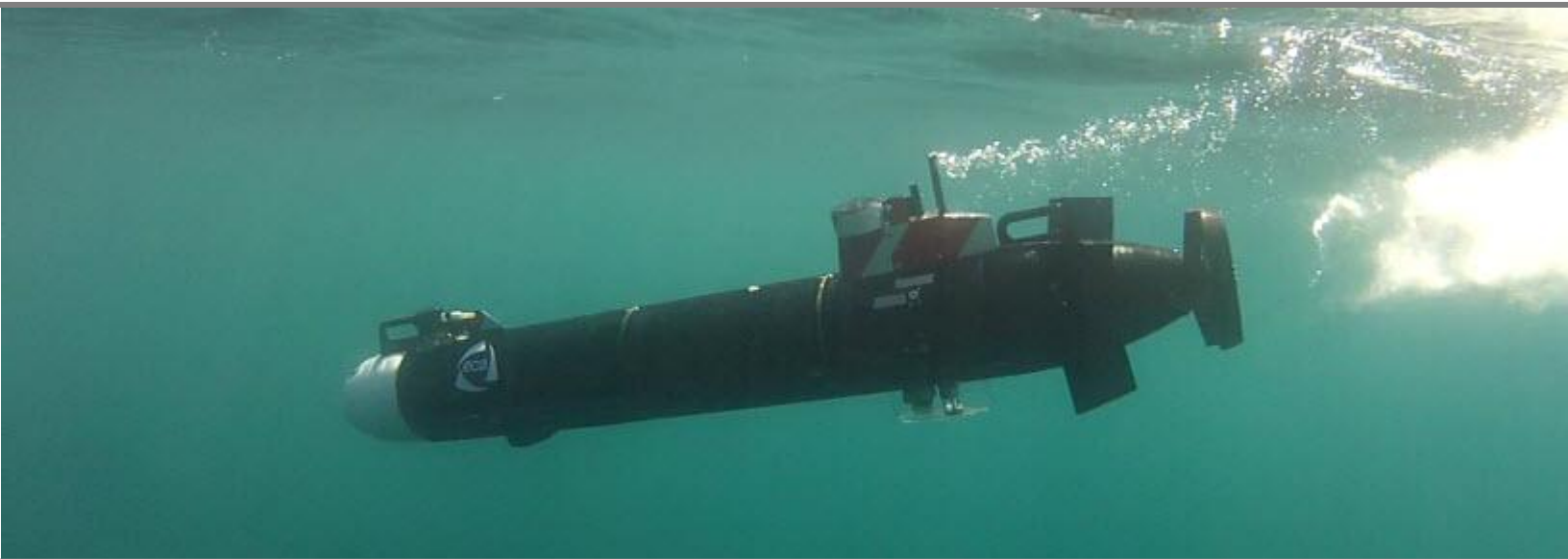


Triton AUV-Suite™

Survey Planning, Data Collection, and Data Processing Software for AUV Survey Systems



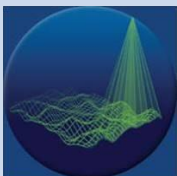
Triton's new AUV-Suite is an integrated software package that provides a full spectrum of tools for the processing, analysis, and display of AUV-collected sidescan, SAS, multibeam, and/or subbottom data. AUVs have become an essential tool for high resolution surveying of the deep ocean environment as well as for regions difficult to access with surface vessels. AUV-Suite includes a comprehensive set of Triton software modules operating in an integrated geo-coded environment for rapid, accurate processing and fusion of AUV multi-sensor data.

Software packages included in AUV-Suite are mission based and cover the different phases of the AUV mission.

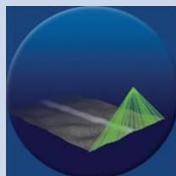
- **Mission Planning** provides the ability to plan complex surveys including AUV launch and recovery points, generate transit lines to survey area(s), and plot multiple survey plans for long AUV missions.
- **Data Collection / Mission Monitoring** interfaces with the sonar and ancillary sensors and correctly logs navigation, attitude, and sounding data into industry-standard XTF data files; low bandwidth telemetry if available on the vehicle allows for real-time survey feedback from the AUV.
- **Post-mission Analysis** utilizes our complete data processing and interpretation software that provides all of the special tools necessary to produce accurate bathymetric maps, sidescan mosaics and subbottom profiler data.

Whether surveying for hydrography, mine hunting, subsea developments, harbor security, natural resource exploration, habitat mapping, or scientific research, Triton AUV-Suite has the tools needed to provide the highest quality results!

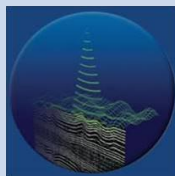
multibeam



sidescan



subbottom



TRITON
IMAGING, INC.

AN ECA GROUP COMPANY 

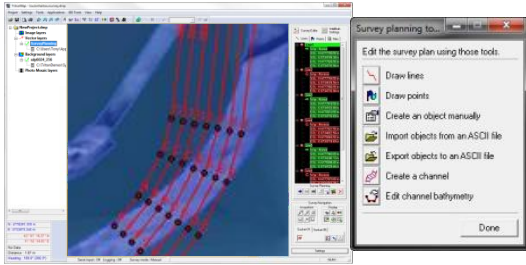
(+1) 831-722-7373

www.tritonimaginginc.com

Triton AUV-Suite™

Survey Planning, Data Collection, and Data Processing Software for AUV Survey Systems

Mission Planning



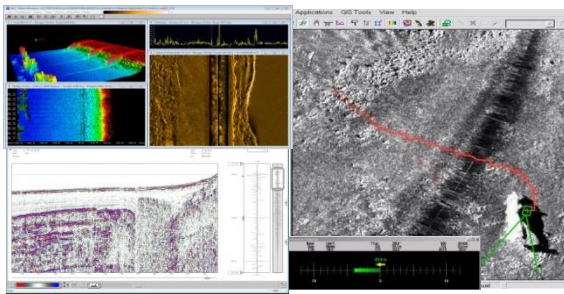
Load Background Information

- Load sidescan mosaics, bathymetry DTMs, GeoTiff files, electronic charts, and/or other available data of survey area into map-based, multi-layer GIS environment.
- Graphical layout of waypoints, targets, hazard, vehicle path.

Create Mission Plan

- Import external line plans or use map-based drawing tools by specifying target locations, waypoints, and/or desired survey track lines to be followed by the AUV.
- Includes AUV launch point, descent, transit and survey line plans, and recovery location.

Data Collection / Mission Monitoring



Data Logging

- Sonar, MRU, GPS, SVS data and control interfaces
- MRU and GPS interfaces
- Target capture from sidescan waterfall

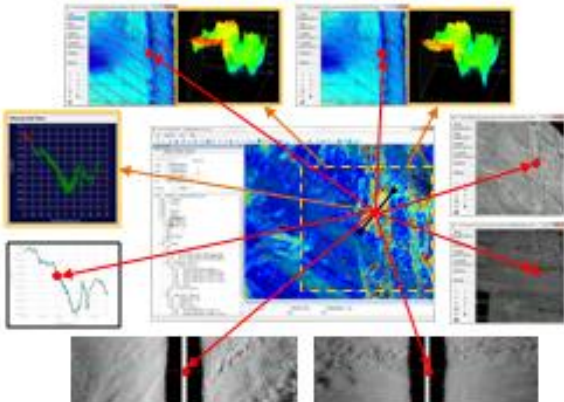
Real-time Data Displays

- Sonar imagery waterfall, signal graph, parameters, bathy & backscatter waterfalls, 3D bathy grid, attitude, etc.
- Sonar data quality monitor and alarms
- Real-time grid or mosaic creation and map display

Real-time Survey Control

- Map display of multiple vessel tracks
- Helmsman line position display

Post Mission Analysis



Navigation Processing

- Internal navigation filtering and smoothing algorithms
- Ability to import externally processed navigation.
- View beamlines to see results of navigation processing.

Sidescan Mosaicing

- dB-based imagery with multiple correction options
- Target and seabed classification modules

Bathymetry Gridding

- DTM, CUBE, QC layers, IHO compliance
- 2D swath and 3D area sounding editors

Subbottom Processing

- Filters and LUT profile image enhancements
- Reflector digitizing and editing tools
- Project borehole data onto profiles

Final Products/Exports

- GeoTIFF, KML, DXF (optional: ASCII, GSF, HTF, BAG, SD)

SONAR COMPATIBILITY

- Kongsberg
- Reson
- R2Sonic
- Norbit
- Klein
- Edgetech
- Benthos
- Applied Acoustics

SYSTEM REQUIREMENTS

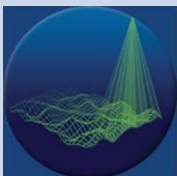
- Windows XP, Windows 7, or Windows 8
- 32-bit or 64-bit
- 2GB RAM minimum

CONTACT US

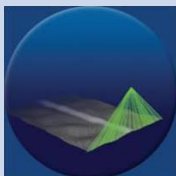
Contact us for demo licenses, tutorials, price quotes and for software purchases at:

sales@tritonimaginginc.com

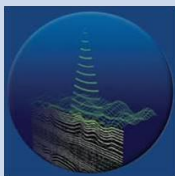
multibeam



sidescan



subbottom



TRITON
IMAGING, INC

AN ECA GROUP COMPANY 

(+1) 831-722-7373

www.tritonimaginginc.com