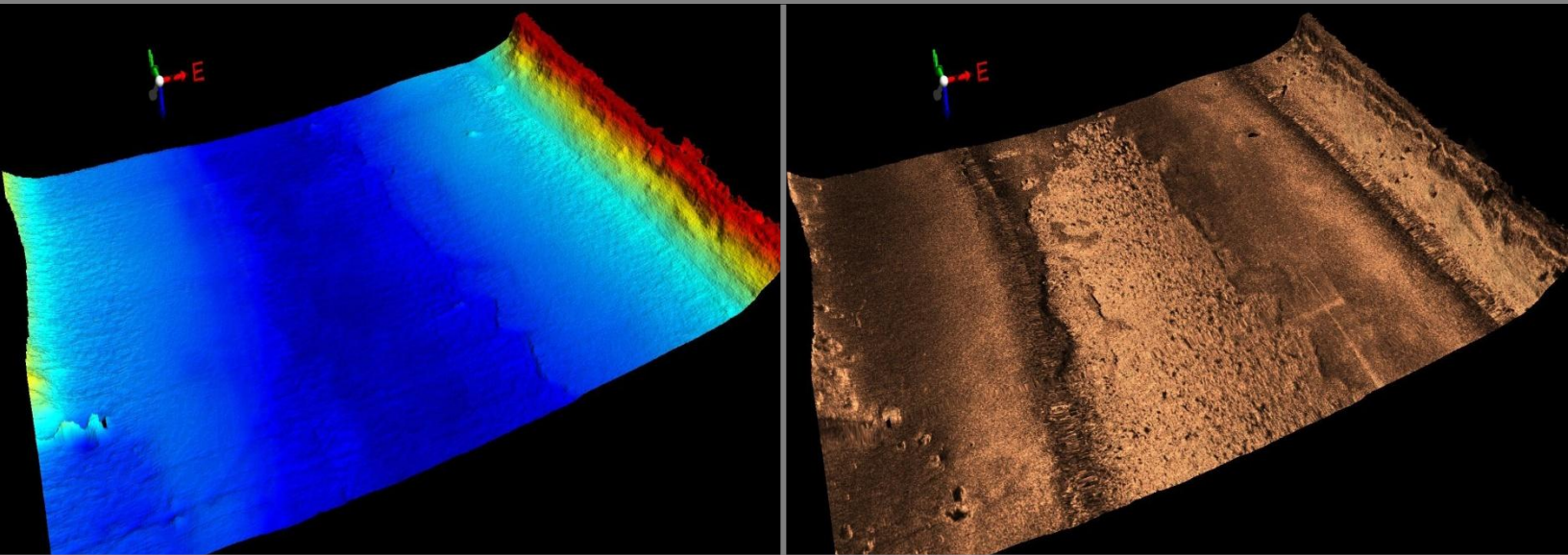


# Triton IFM-Suite™

Survey Planning, Data Collection, and Data Processing Software for Interferometric Sonars



Triton's new IFM-Suite is an integrated software package that provides everything needed to plan and conduct surveys with interferometric sonars and to process collected sidescan data into accurate geo-coded mosaics and the bathymetry data into accurate geo-coded bathymetric maps.

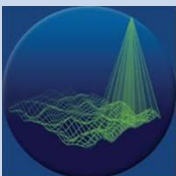
As surveying with interferometric sonars increases to maximum bottom coverage, Triton has worked closely with the sonar manufacturers to provide the best data collection and processing tools available. Since interferometric sonars provide both high quality sidescan and bathymetry data, it is essential to maximize the processing results for both data types!

IFM-Suite consists of the following four software packages.

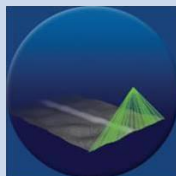
- **ISIS Offshore-IFM** interfaces to the sonar and ancillary sensors including MRUs, GPS & gyros and correctly logs navigation, attitude, and sounding data into industry-standard XTF data files.
- **Survey Pro-IFM / Process RT-IFM** combination provides the ability plan complex surveys, monitor data quality in real-time during data collection, and perform real-time data processing.
- **Perspective-IFM** is the production data processing package that provides all of the special tools necessary to produce accurate bathymetric maps and sidescan mosaics from the interferometric sonar data.

Whether surveying for hydrography, mine hunting, subsea developments, harbor security, natural resource exploration, habitat mapping, or scientific research, Triton IFM-Suite has the tools needed to provide the highest quality results!

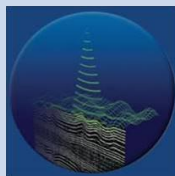
multibeam



sidescan



subbottom



TRITON  
IMAGING, INC

AN ECA GROUP COMPANY 

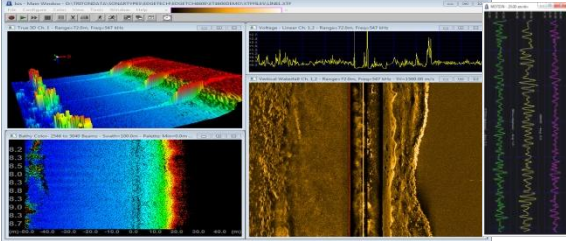
(+1) 831-722-7373

[www.tritonimaginginc.com](http://www.tritonimaginginc.com)

# Triton IFM-Suite™

Survey Planning, Data Collection, and Data Processing Software for Interferometric Sonars

## ISIS Offshore-IFM



### Data Logging

- Sonar data and control interface
- MRU and GPS interfaces
- Target capture from waterfall

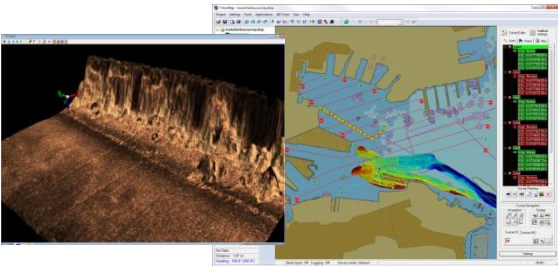
### Real-time Data Displays

- Imagery waterfall, signal graph, parameters, TVG, slant range correction, palette, BAC/GAC
- Beam pattern, bathymetry waterfall, 3D bathy display, GPS position, attitude, etc.

### File Output

- Industry standard XTF files

## Survey Pro-IFM / Process RT-IFM



### Survey Planning

- Map-based drawing tools
- Import external line plans

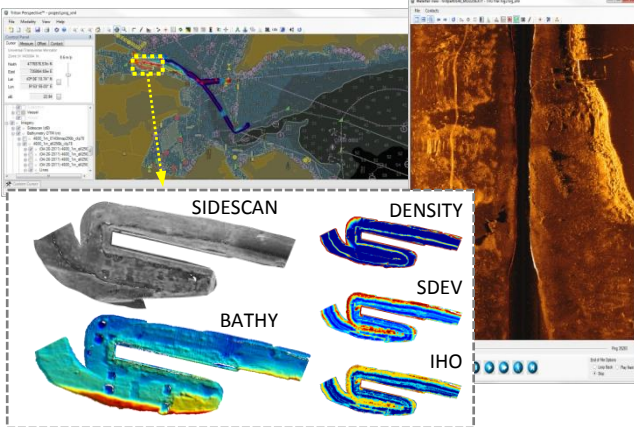
### Real-time Survey Control

- Map display of multiple vessel tracks
- Helmsman line position display
- User configurable alarms

### Data Monitoring and QC Processing

- Sonar data quality monitor
- Real-time grid or mosaic creation and map display

## Perspective-IFM



### Data Input and Display

- Import raw data (XTF) files, GeoTIFFs, bathy DTMs, sidescan mosaics, vectors, ENCs, etc.
- Click on survey lines to display raw data

### Sidescan Mosaicing

- Navigation processing/smoothing
- dB-based imagery with multiple correction options

### Bathymetry Gridding

- SVP, tides, squat, offsets
- DTM, CUBE, QC layers, IHO compliance

### Data Analysis

- Target and seabed classification modules
- 2D swath and 3D area sounding editors

### Exports

- XYA, XYZ, GeoTIFF, KML, GSF, HTF, BAG

### SONAR COMPATIBILITY

- Klein
- Edgetech
- Benthos
- C-MAX
- Innomar
- Marine Sonic
- Tritech
- plus others

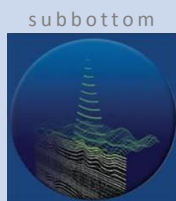
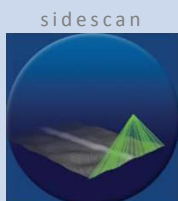
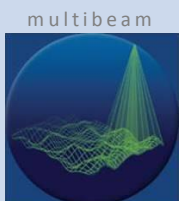
### SYSTEM REQUIREMENTS

- Windows XP, Windows 7, or Windows 8
- 32-bit or 64-bit
- 2GB RAM minimum

### CONTACT US

Contact us for demo licenses, tutorials, price quotes and for software purchases at:

[sales@tritonimaginginc.com](mailto:sales@tritonimaginginc.com)



TRITON  
IMAGING, INC

AN ECA GROUP COMPANY 

(+1) 831-722-7373

[www.tritonimaginginc.com](http://www.tritonimaginginc.com)