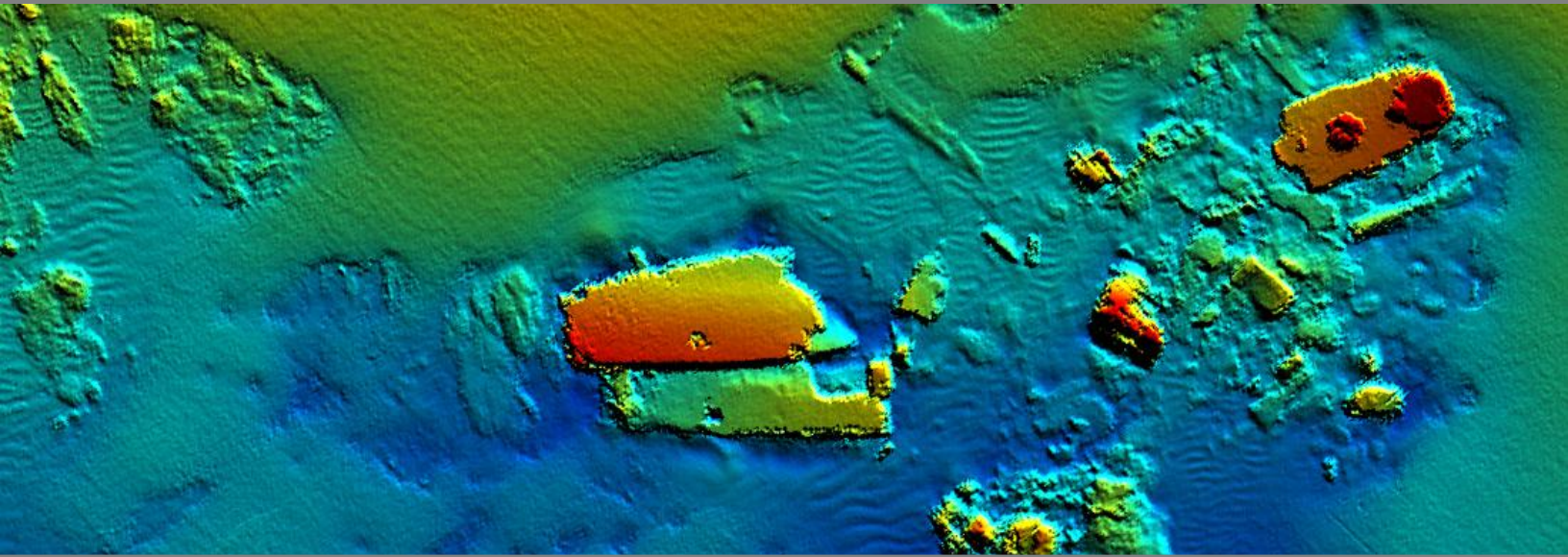


# Triton MBE-Suite™

Survey Planning, Data Collection, and Data Processing Software for Multibeam Sonars



Triton's new MBE-Suite is an integrated software package that provides everything needed to plan and conduct multibeam surveys, and to process collected data into accurate geo-coded bathymetric maps and backscatter/ snippet mosaics.

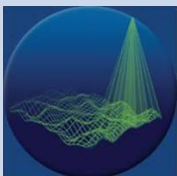
Triton's multibeam collection and processing tools are designed to meet the demanding needs of the hydrographic community. Through rigorous regression testing by external collaborators, Triton software has been proven to provide results that meet industry standards.

MBE-Suite consists of the following four software packages.

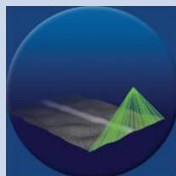
- **ISIS Offshore-MBE** interfaces to the sonar and ancillary sensors including MRUs, GPS & gyros and correctly logs navigation, attitude, and sounding data into industry-standard XTF data files.
- **Survey Pro-MBE / Process RT-MBE** combination provides the ability plan complex surveys, monitor data quality in real-time during data collection, and perform real-time data processing.
- **Perspective-MBE** is the production data processing package that provides all of the special tools necessary to produce accurate bathymetric maps and backscatter/snippet mosaics from multibeam sonar data.

Whether surveying for hydrography, mine hunting, subsea developments, harbor security, natural resource exploration, habitat mapping, or scientific research, Triton MBE-Suite has the tools needed to provide the highest quality results!

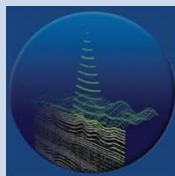
multibeam



sidescan



subbottom



TRITON  
IMAGING, INC

AN ECA GROUP COMPANY 

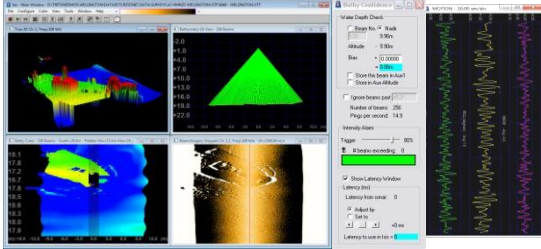
(+1)831-722-7373

[www.tritonimaginginc.com](http://www.tritonimaginginc.com)

# Triton MBE-Suite™

Survey Planning, Data Collection, and Data Processing Software for Multibeam Sonars

## ISIS Offshore-MBE



### Data Logging

- Sonar data and control interface
- MRU, GPS, SVS interfaces

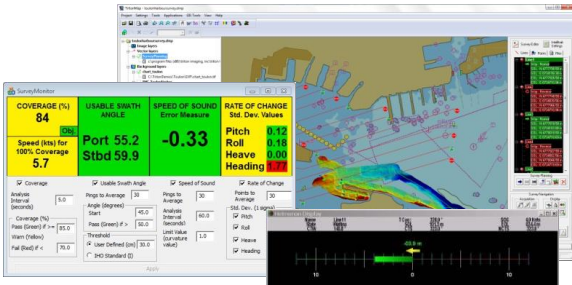
### Real-time Data Displays

- Beam pattern, bathy & backscatter waterfalls, 3D bathy grid, GPS position, attitude, etc.
- Coverage map

### File Output

- Industry standard XTF files

## Survey Pro-MBE / Process RT-MBE



### Survey Planning

- Map-based drawing tools
- Import external line plans

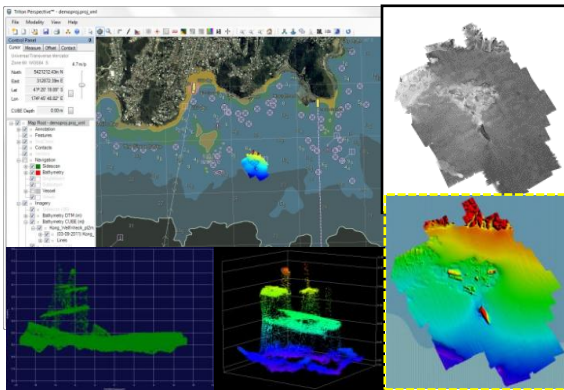
### Real-time Survey Control

- Map display of multiple vessel tracks
- Helmsman line position display
- User configurable alarms

### Data Monitoring and QC Processing

- Sonar data quality monitor
- Real-time bathy grid creation and map display

## Perspective-MBE



### Data Input and Display

- Multi-layer, GIS based display
- Import raw data (XTF) files, GeoTIFFs, bathy DTMs, sidescan mosaics, vectors, ENCs, etc.

### Data Editing

- 2D swath and 3D area editors
- Beam suppression, golden soundings

### Processing

- SVP, tides, squat, offsets
- DTM, CUBE, QC layers, IHO compliance
- Geocoder backscatter/snippet mosaics

### Exports

- XYZ, GeoTIFF, GSF, HTF, BAG, KML

### SONAR COMPATIBILITY

- Kongsberg
- Reson
- R2Sonic
- Norbit
- Imagenex
- Odom
- Atlas
- plus others

### SYSTEM REQUIREMENTS

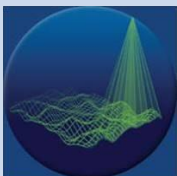
- Windows XP, Windows 7, or Windows 8
- 32-bit or 64-bit
- 2GB RAM minimum

### CONTACT US

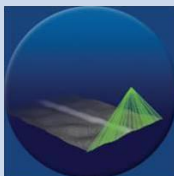
Email us for demo licenses, tutorials, price quotes and for software purchases at:

[sales@tritonimaginginc.com](mailto:sales@tritonimaginginc.com)

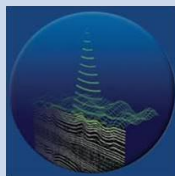
multibeam



sidescan



subbottom



TRITON  
IMAGING, INC

AN ECA GROUP COMPANY 

(+1) 831-722-7373

[www.tritonimaginginc.com](http://www.tritonimaginginc.com)