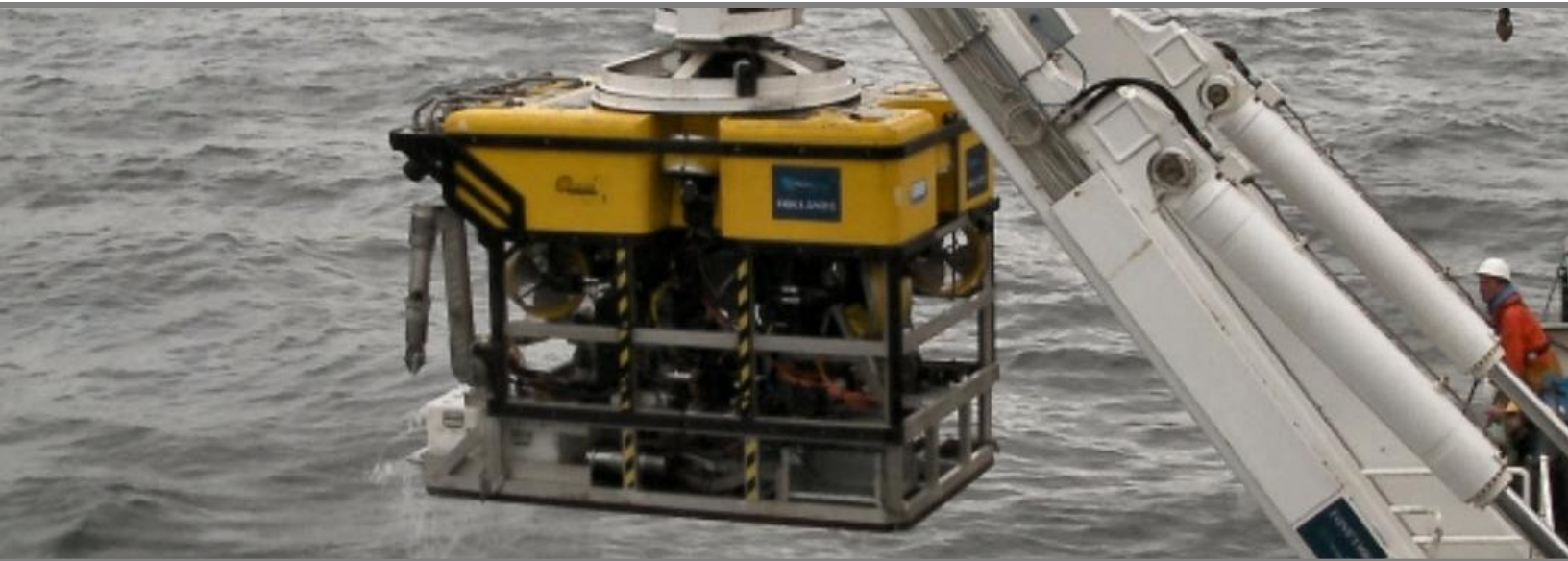


Triton ROV-Suite™

Survey Planning, Data Collection, and Data Processing Software for ROV Survey Systems



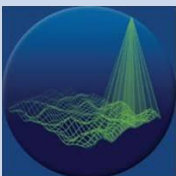
Triton's new ROV-Suite is an integrated software package that provides everything needed to plan and conduct geophysical surveys with remotely operated vehicles (ROVs) fitted with sidescan, multibeam, and/or subbottom sonars. Conducting geophysical surveys using ROVs allows the sonar to be near the seafloor in deep water environments while keeping real-time communication from the sonar to the topside vessel. Real-time communication with the vehicle allows control of the sonar during the mission plus provides feedback including quality assurance and positioning information.

Software packages included in ROV-Suite are mission-based and cover the different phases of the ROV mission.

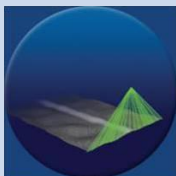
- **Mission Planning** provides the ability to plan complex surveys including ROV launch and recovery points, generate transit lines to survey area(s), and plot multiple survey plans for long ROV missions.
- **Data Collection / Mission Monitoring** communicates through the ROV tether for interfacing with the sonar and ancillary sensors, for streaming data to the topside vessel for data logging, to monitor data quality in real-time during data collection, and to perform real-time data processing.
- **Post-mission Analysis** utilizes our complete data processing and interpretation software that provides all of the special tools necessary to produce accurate bathymetric maps, sidescan mosaics and subbottom profiler data.

Whether surveying for hydrography, mine hunting, subsea developments, harbor security, natural resource exploration, habitat mapping, or scientific research, Triton ROV-Suite has the tools needed to provide the highest quality results!

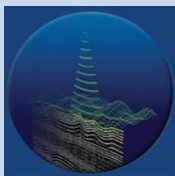
multibeam



sidescan



subbottom



TRITON
IMAGING, INC.

AN ECA GROUP COMPANY 

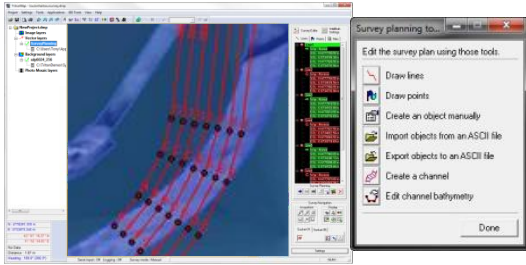
(+1) 831-722-7373

www.tritonimaginginc.com

Triton ROV-Suite™

Survey Planning, Data Collection, and Data Processing Software for ROV Survey Systems

Mission Planning



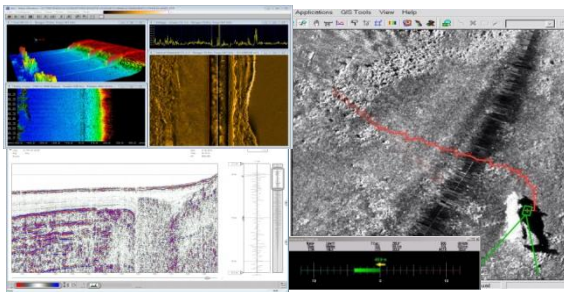
Load Background Information

- Load sidescan mosaics, bathymetry DTMs, GeoTiff files, electronic charts, and/or other available data of survey area into map-based, multi-layer GIS environment.
- Graphical layout of waypoints, targets, hazard, vehicle path.

Create Mission Plan

- Import external line plans or use map-based drawing tools by specifying target locations, waypoints, and/or desired survey track lines to be followed by the ROV.
- Includes ROV launch point, descent, transit and survey line plans, and recovery location.

Data Collection / Mission Monitoring



Data Logging

- Sonar, MRU, GPS, SVS data and control interfaces
- MRU and GPS interfaces
- Target capture from sidescan waterfall

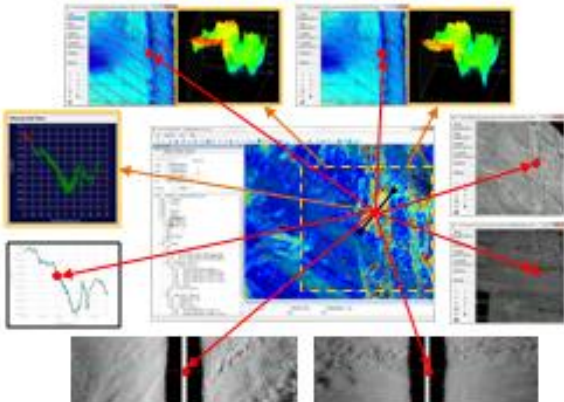
Real-time Data Displays

- Sonar imagery waterfall, signal graph, parameters, bathy & backscatter waterfalls, 3D bathy grid, attitude, etc.
- Sonar data quality monitor and alarms
- Real-time grid or mosaic creation and map display

Real-time Survey Control

- Map display of multiple vessel tracks
- Helmsman line position display

Post Mission Analysis



Navigation Processing

- Internal navigation filtering and smoothing algorithms
- Ability to import externally processed navigation.
- View beamlines to see results of navigation processing.

Sidescan Mosaicing

- dB-based imagery with multiple correction options
- Target and seabed classification modules

Bathymetry Gridding

- DTM, CUBE, QC layers, IHO compliance
- 2D swath and 3D area sounding editors

Subbottom Processing

- Filters and LUT profile image enhancements
- Reflector digitizing and editing tools
- Project borehole data onto profiles

Final Products/Exports

- GeoTIFF, KML, DXF (optional: ASCII, GSF, HTF, BAG, SD)

SONAR COMPATIBILITY

- Kongsberg
- Reson
- R2Sonic
- Norbit
- Klein
- Edgetech
- Benthos
- Applied Acoustics

SYSTEM REQUIREMENTS

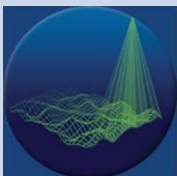
- Windows XP, Windows 7, or Windows 8
- 32-bit or 64-bit
- 2GB RAM minimum

CONTACT US

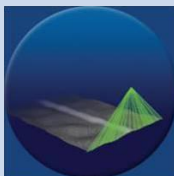
Contact us for demo licenses, tutorials, price quotes and for software purchases at:

sales@tritonimaginginc.com

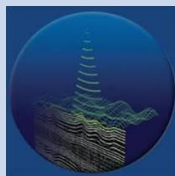
multibeam



sidescan



subbottom



TRITON
IMAGING, INC

AN ECA GROUP COMPANY 

(+1) 831-722-7373

www.tritonimaginginc.com