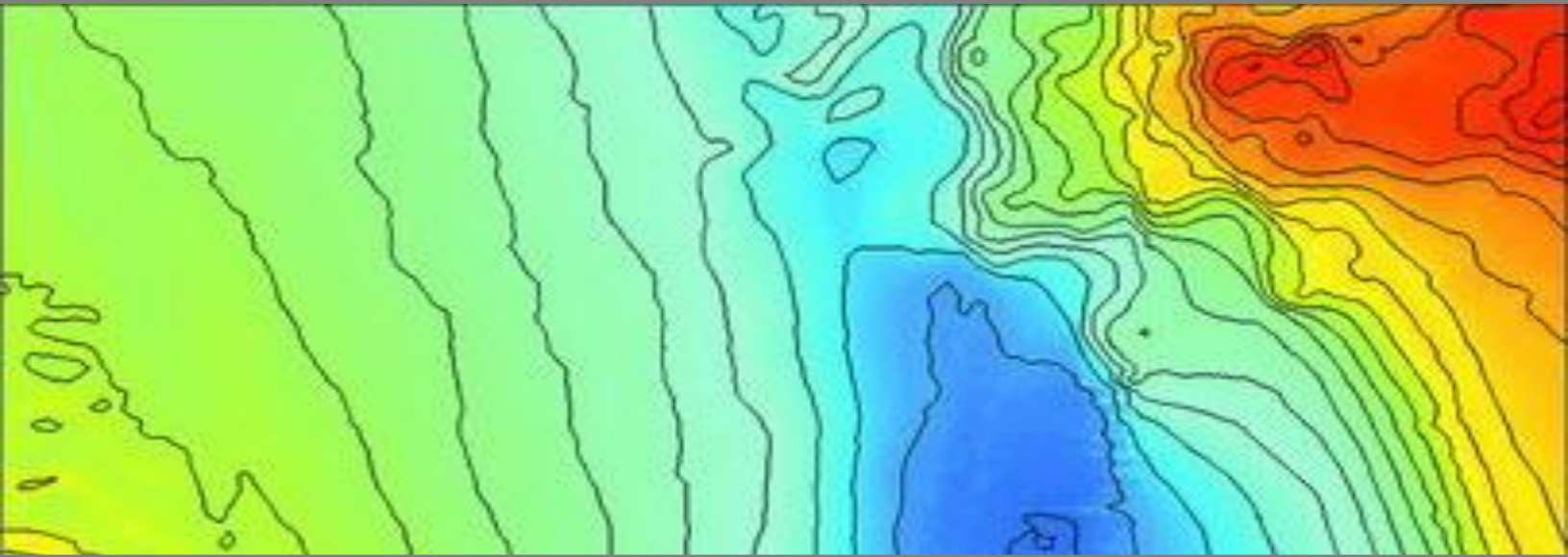


Triton SBE-Suite™

Survey Planning, Data Collection, and Data Processing Software for Singlebeam Echosounders



Triton's new SBE-Suite is an integrated collection of Triton software modules that supports the data acquisition, line planning, survey execution, quality control, and data processing for surveys conducted with singlebeam echosounders.

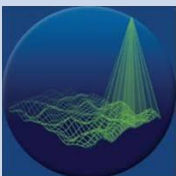
Triton's singlebeam suite is designed for easy setup and operation, and includes a real-time profile display of the data, plus numerous quality control alarms for monitoring position quality and statistics, attitude data limits, speed over ground, and minimum survey depth. Tin modeling of the collected data provides the best results from the individual singlebeam survey lines.

SBE-Suite consists of the following three software packages.

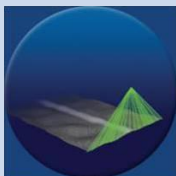
- **ISIS Offshore-SBE** interfaces to the sonar and ancillary sensors and correctly logs navigation and singlebeam echosounder data into industry-standard XTF data files.
- **Survey Pro-SBE** provides the ability plan complex surveys, and to monitor navigation position and quality in real-time during data collection.
- **Process Pro-SBE** is the production data processing package that provides a complete set of tools for the processing and gridding of singlebeam echosounder data.

Whether surveying for hydrography, mine hunting, subsea developments, harbor security, natural resource exploration, habitat mapping, or scientific research, Triton SBE-Suite has the tools needed to provide the highest quality results!

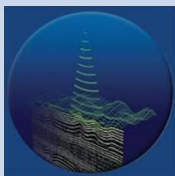
multibeam



sidescan



subbottom



TRITON
IMAGING, INC

AN ECA GROUP COMPANY 

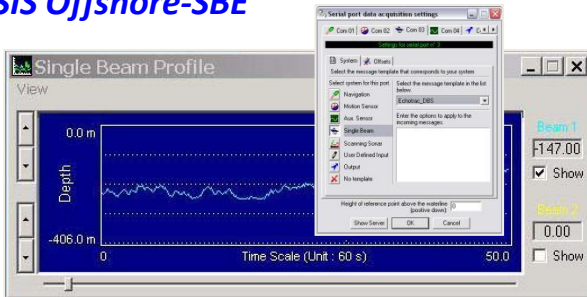
(+1) 831-722-7373

www.tritonimaginginc.com

Triton SBE-Suite™

Survey Planning, Data Collection, and Data Processing Software for Singlebeam Echosounders

ISIS Offshore-SBE



Data Logging

- Serial or UDP connection to echosounder
- Navigation system and heave sensor inputs

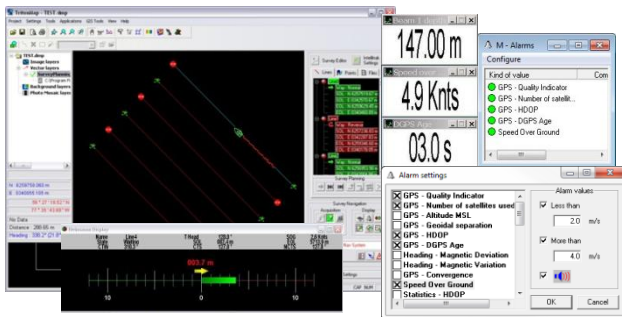
Real-time Data Displays

- 2D real-time data display
- Serial/UDP port monitors

File Output

- Industry standard XTF files

Survey Pro-SBE



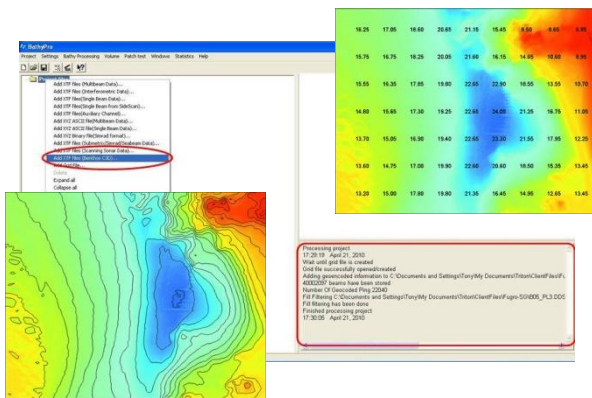
Survey Planning

- Map-based drawing tools
- Draw multi-segment survey lines
- Import external line plans

Real-time Survey Control

- Map display of multiple vessel tracks
- Real-time displays: Helmsman line position, distance to end of current line, start of next line, compass rose, distance and direction off line, course to waypoint, etc.
- User-configurable alarms to monitor: GPS quality and age, vessel speed & attitude

Process Pro-SBE



Data Input

- Import raw XTF data
- Motion and navigation included in XTF files

Processing

- Navigation processing tools
- Set sounding suppression filters
- Apply SVP and tide corrections
- Gridding of soundings using TIN model

Exports

- Output bathymetry to ASCII XYZ and DXF formats
- Generate bathymetric contours as DXF files
- Generate chart soundings

SONAR COMPATIBILITY

- Odom
- Atlas
- Knudsen
- Echotrac
- Syqwest
- plus others

SYSTEM REQUIREMENTS

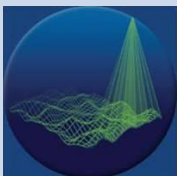
- Windows XP, Windows 7, or Windows 8
- 32-bit or 64-bit
- 2GB RAM minimum

CONTACT US

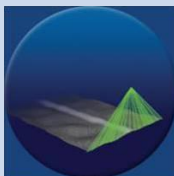
Contact us for demo licenses, tutorials, price quotes and for software purchases at:

sales@tritonimaginginc.com

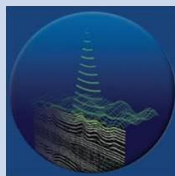
multibeam



sidescan



subbottom



TRITON
IMAGING, INC.

AN ECA GROUP COMPANY 

(+1) 831-722-7373

www.tritonimaginginc.com